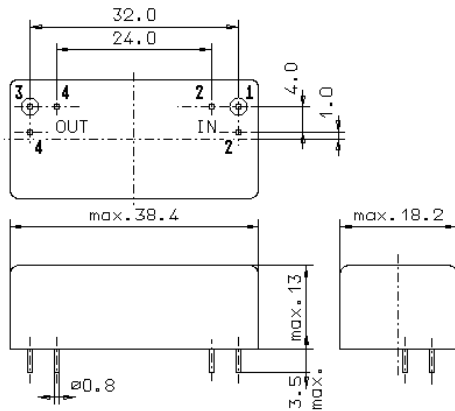


Specification for LC filter:

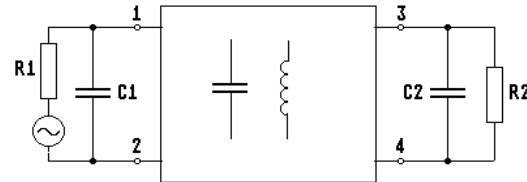
**LC 9.4125 - 1.0/04**

1. General

1.1. Package:



GM17

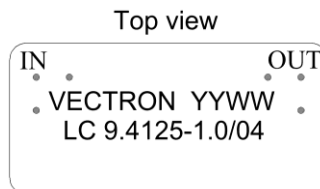


- 1.2. Type name: LC 9.4125-1.0/04
- 1.3. Number of poles: 4
- 1.4. Operating temperature range: -40°C to +100°C
- 1.5. Storage temperature range: -55°C to +105°C

2. Electric values

- 2.1. Nominal centre frequency fo: 9.4125 MHz
- 2.2. Pass band
  - 2.2.1. Bandwidth between 1.0 dB - frequencies: > fo ± 500 kHz
  - 2.2.2. Ripple in pass band: < 0.5 dB ( peak to peak )
  - 2.2.3. Return loss at fo ± 500 kHz: > 9.55 dB ( VSWR < 2:1 )
  - 2.2.4. Insertion loss: < 3.0 dB  
( measured on smallest attenuation in pass band )
- 2.3. Stop band
  - 2.3.1. fo ± 4.0 MHz: > 50 dB
  - 2.3.2. fo - 7.5 MHz: > 70 dB
  - 2.3.3. fo + 6.5 MHz: > 70 dB
  - 2.3.4. Alternate attenuation: > 80 dB
- 2.4. Terminating impedance ( input and output ): 50 Ω // 0 pF
- 2.5. Maximum input power level: +10 dBm / +20 dBm ( working / non-damaged )

3. Marking:



- 4. Environment conditions:
  - random vibration: 20 Hz.....2 kHz, 30g peak
  - sine vibration: 20 Hz.....2 kHz, 30g peak
  - shock: 100g peak, 11ms, half sine