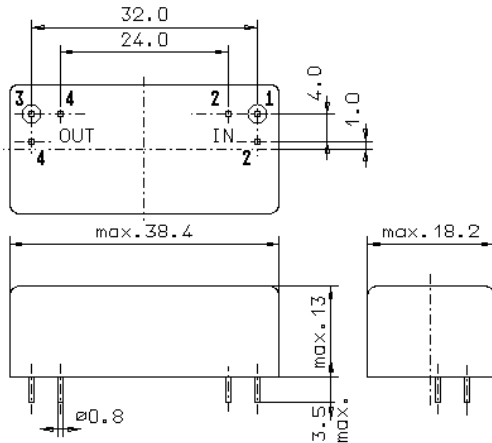


Specification for monolithic crystal filter:

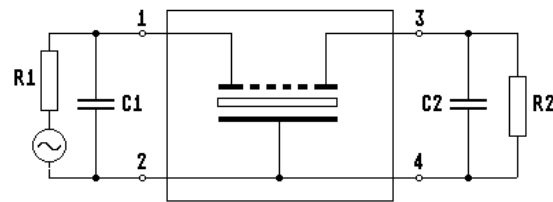
MQF 10.0-0320 / 07

1. General

1.1. Package:

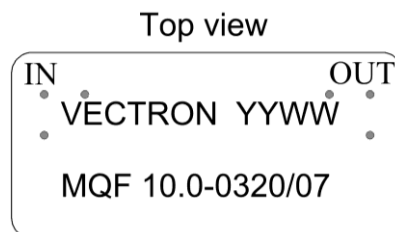


GM17



- | | |
|---|---|
| 1.2. Type name: | MQF 10.0-0320/07 |
| 1.3. Number of poles: | 8 |
| 1.4. Operating temperature range: | -30°C to +85°C |
| 1.5. Storage temperature range: | -55°C to +105°C |
| 2. Electric values | |
| 2.1. Nominal centre frequency fo: | 10.0 MHz |
| 2.2. Pass band | |
| 2.2.1. Bandwidth between 6 dB - frequencies: | > fo ± 1.6 kHz |
| 2.2.2. Ripple: | < 2.0 dB at fo ± 1.2 kHz |
| 2.2.3. Insertion loss: | < 4.0 dB |
| (measured on smallest attenuation in pass band) | |
| 2.3. Stop band | |
| 2.3.1. fo ± 3.5 kHz | > 40 dB |
| 2.3.2. fo ± 4.5 kHz | > 60 dB |
| 2.3.3. fo ± 5.0 kHz | > 70 dB |
| 2.3.4. fo ± 6.0 kHz | > 80 dB |
| 2.3.5. fo ± 8.0 kHz | > 90 dB |
| 2.4. Terminating impedance (input and output): | 50 Ω // 0 pF |
| 2.5. Maximum input power level: | +10 dBm / +20 dBm (working / non-damaged) |

3. Marking:



- | | |
|----------------------------|--------------------------------|
| 4. Environment conditions: | Corresponding to Vectron CF001 |
|----------------------------|--------------------------------|

Edited by: _____ date: _____ name: _____