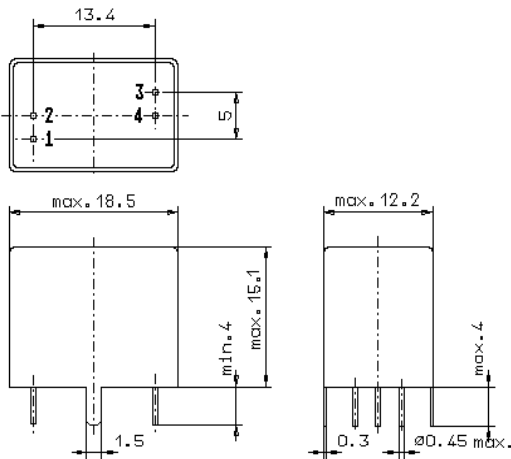


Specification for monolithic crystal filter:

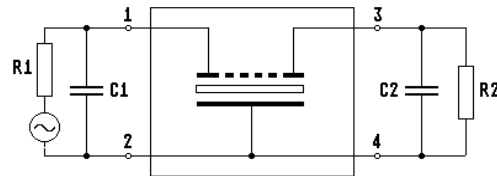
MQF 10.0-0500 / 04

1. General

1.1. Package:



GV5.1



- | | |
|-----------------------------------|------------------|
| 1.2. Type name: | MQF 10.0-0500/04 |
| 1.3. Number of poles: | 8 |
| 1.4. Operable temperature range: | -30°C to +80°C |
| 1.5. Operating temperature range: | -20°C to +70°C |
| 1.6. Storage temperature range: | -55°C to +80°C |

2. Electric values

2.1. Nominal centre frequency f_0 : 10.0 MHz

2.2. Pass band

- | | |
|---|------------------------------------|
| 2.2.1. Bandwidth between 3 dB - frequencies: | $\geq f_0 \pm 2.5$ kHz |
| 2.2.2. Ripple: | ≤ 2.0 dB at $f_0 \pm 1.5$ kHz |
| 2.2.3. Insertion loss: (measured on smallest attenuation in pass band) | ≤ 5.0 dB |

2.3. Stop band

- | | |
|-------------------------------|--------------|
| 2.3.1. $f_0 \pm 5$ kHz | ≥ 40 dB |
| 2.3.2. Alternate attenuation: | ≥ 40 dB |

2.4. Terminating impedance (input and output): $2300 \Omega // 2.5$ pF

3. Marking: manufacturer, date code
10.0-0500/04

4. Environment conditions: Corresponding to Vectron standard CF001

Edited by: _____ date: _____ name: _____