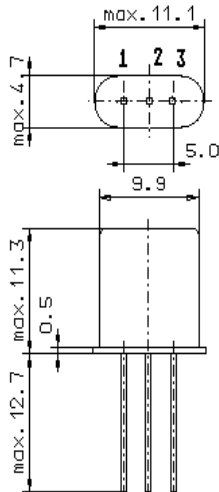


Specification for monolithic crystal filter:

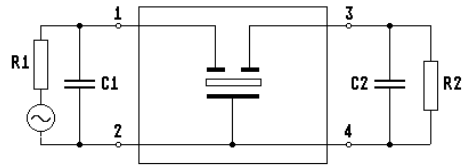
MQF 10.0-0760/01

1. General

1.1. Package:



GH3



- 1.2. Type name: MQF 10.0-0760/01
- 1.3. Number of poles: 2
- 1.4. Operating temperature range: -40°C to +85°C
- 1.5. Storage temperature range: -55°C to +85°C

2. Electric values

- 2.1. Nominal centre frequency fo: 10.0 MHz

2.2. Pass band

- 2.2.1. Bandwidth between 3 dB - frequencies: $\geq f_o \pm 3.8$ kHz
- 2.2.2. Ripple: ≤ 1.0 dB at $f_o \pm 2.0$ kHz
- 2.2.3. Insertion loss: ≤ 1.0 dB
(measured on smallest attenuation in pass band)

2.3. Stop band

- 2.3.1. $f_o \pm 40$ kHz ≥ 30 dB
- 2.3.2. $f_o \pm 60$ kHz.....600 kHz ≥ 40 dB
- 2.3.3. Spurious responses: ≥ 14 dB

- 2.4. Terminating impedance (input and output): $3900 \Omega // 2.0$ pF

- 3. Marking: manufacturer, date code
10.0-0760/01

- 4. Environment conditions: Corresponding to Vectron CF001

Edited by: _____ date: _____ name: _____