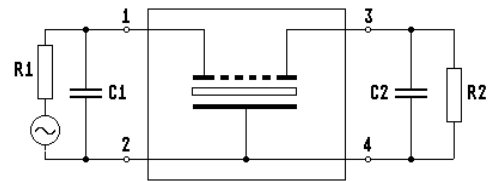
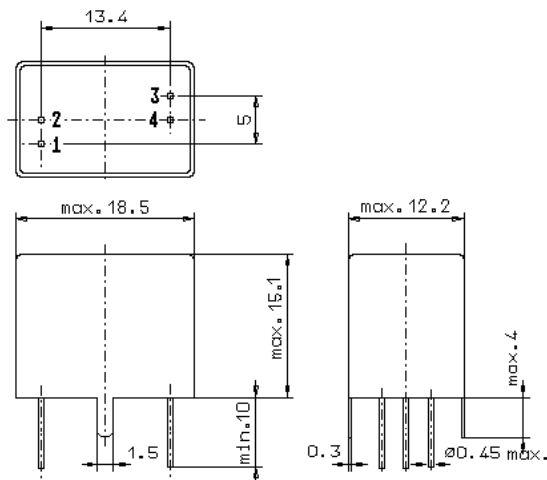


Specification for monolithic crystal filter:

MQF 10.0-2000/04

1. General

1.1. Package:



- | | |
|-----------------------------------|------------------|
| 1.2. Type name: | MQF 10.0-2000/04 |
| 1.3. Number of poles: | 8 |
| 1.4. Operable temperature range: | -40°C to +80°C |
| 1.5. Operating temperature range: | -40°C to +80°C |
| 1.6. Storage temperature range: | -55°C to +105°C |

2. Electric values

- | | |
|---|--|
| 2.1. Nominal centre frequency f_0 : | 10.0 MHz |
| 2.2. Pass band | |
| 2.2.1. Bandwidth between 6 dB - frequencies: | $\geq f_0 \pm 10.0$ kHz |
| 2.2.2. Ripple: | ≤ 3.0 dB at $f_0 \pm 7.0$ kHz |
| 2.2.3. Insertion loss:
(measured on smallest attenuation in pass band) | ≤ 4.0 dB |
| 2.3. Stop band | |
| 2.3.1. $f_0 \pm 15.5$ kHz | ≥ 40 dB |
| 2.3.2. $f_0 \pm 25$ kHz | ≥ 75 dB |
| 2.3.3. Alternate attenuation: | ≥ 80 dB |
| 2.4. Terminating impedance (input and output): | $9000 \Omega \pm 10 \% // 0 \text{ pF} \pm 2 \text{ pF}$ |
| 3. Marking: | manufacturer, date code
MQF 10.0-2000/04 |
| 4. Environment conditions: | Corresponding to Vectron CF001 |

Edited by: _____ date: _____ name: _____