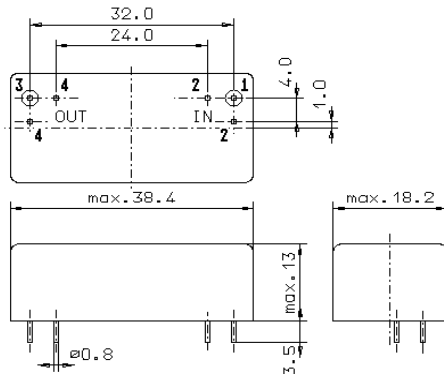


Specification for monolithic crystal filter:

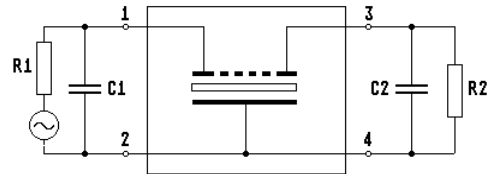
**MQF 10.7-0300/11**

## 1. General

### 1.1. Package:



GM17



- |                                   |                  |
|-----------------------------------|------------------|
| 1.2. Type name:                   | MQF 10.7-0300/11 |
| 1.3. Number of poles:             | 6                |
| 1.4. Operating temperature range: | 0°C to +50°C     |
| 1.5. Storage temperature range:   | -25°C to +85°C   |

## 2. Electric values

- |   |   |
|---|---|
| 2.1. Nominal centre frequency fo:   | 10.7 MHz                                    |
| 2.2. <b>Pass band</b>   |   |
| 2.2.1. Centre frequency fc:   | 10.7 MHz ± 400 Hz                           |
| 2.2.2. Bandwidth between 3 dB - frequencies:                                | ≥ fc ± 1.35 kHz<br>≤ fc ± 1.65 kHz          |
| 2.2.3. Ripple ( at fc ± 0.75 kHz ):   | ≤ 0.5 dB                                    |
| 2.3.4. Phase difference for pairs at fc ( Δφc ):                            | ≤ 12°                                       |
| 2.2.5. Phase tracking for pairs referred back to Δφc :                      | ≤ 6° at fc ± 1.2 kHz ( i.e. Δφ ≤ 6° + Δφc ) |
| 2.3.6. Reflection loss ( at fc ± 1.35 kHz ):                                | ≥ 9.55 dB ( i.e. VSWR < 2 )                 |
| 2.2.7. Insertion loss:<br>( measured on smallest attenuation in pass band ) | ≤ 5.0 dB                                    |
| 2.3. <b>Stop band</b>   |   |
| 2.3.1. fo ± 7.5 kHz   | ≥ 60 dB                                     |
| 2.3.2. Alternate attenuation:   | ≥ 80 dB ( except spurious )                 |
| 2.4. Terminating impedance ( input and output ):                            | 50 Ω // 0 pF                                |
| 3. Marking:   | manufacturer, date code<br>MQF 10.7-0300/11 |
| 4. Environment conditions:  | Corresponding to Vectron CF001              |

Edited by: \_\_\_\_\_ date: \_\_\_\_\_ name: \_\_\_\_\_