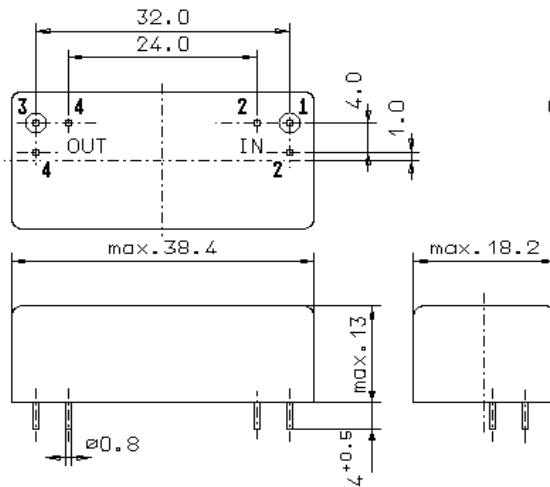


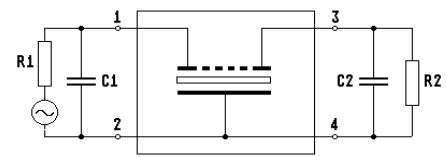
Specification for monolithic crystal filter: **MQF 10.7-0760/05V0**

1. General

1.1. Package:



GM17.2



- | | |
|-----------------------------------|--------------------|
| 1.2. Type name: | MQF 10.7-0760/05V0 |
| 1.3. Number of poles: | 10 |
| 1.4. Operable temperature range: | -30°C to +70°C |
| 1.5. Operating temperature range: | -20°C to +60°C |
| 1.6. Storage temperature range: | -40°C to +90°C |

2. Electric values

- | | |
|---|------------------------------------|
| 2.1. Nominal centre frequency f_0 : | 10.7 MHz |
| 2.2. Pass band | |
| 2.2.1. Centre frequency f_m : | 10.7 MHz \pm 300 Hz |
| 2.2.2. Bandwidth between 6 dB - frequencies: | $\geq f_m \pm 3.8$ kHz |
| 2.2.3. Ripple: | ≤ 2.0 dB at $f_m \pm 2.5$ kHz |
| 2.2.4. Insertion loss:
(measured on smallest attenuation in pass band) | ≤ 4.0 dB |

2.3. Stop band

- | | |
|---|--------------|
| 2.3.1. $f_m \pm 6.8$ kHz | ≥ 60 dB |
| 2.3.2. $f_m \pm 8.0$ kHz | ≥ 80 dB |
| 2.3.3. $f_m \pm 200$ kHz..... ± 5 MHz | ≥ 90 dB |

- | | |
|--|---|
| 2.4. Terminating impedance (input and output): | 910 Ω ± 10 % // 25 pF ± 5 pF |
| 2.5. Nominal input power level: | 0 dBm |
| 2.6. Maximum input power level: | +10 dBm |

4. Others

- | | |
|--------------|---------------|
| 4.1. Design: | case soldered |
| 4.2. Weight: | ≤ 25 g |

- | | |
|-------------|---|
| 3. Marking: | manufacturer, date code
MQF 10.7-0760/05V0 |
|-------------|---|

- | | |
|----------------------------|--------------------------------|
| 4. Environment conditions: | Corresponding to Vectron CF001 |
|----------------------------|--------------------------------|

Edited by: _____ date: _____ name: _____