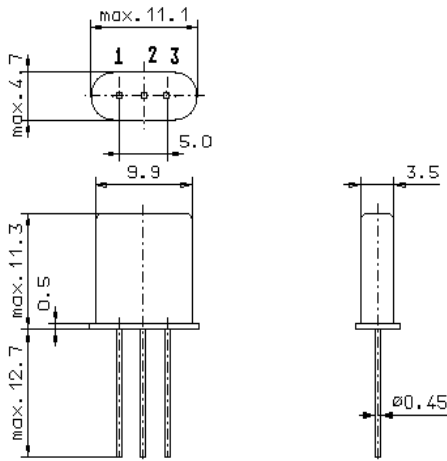


Specification for monolithic crystal filter:

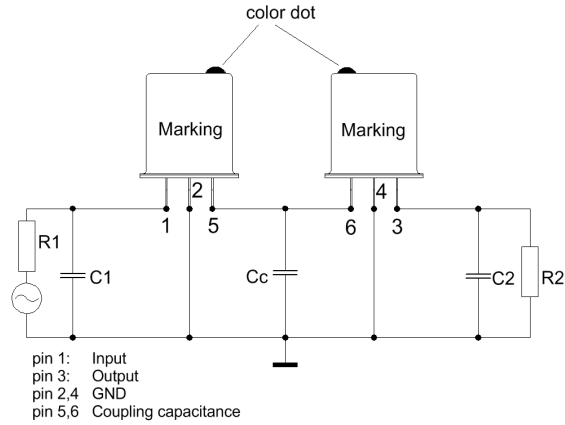
MQF 10.7-1500/02

1. General

1.1. Package: 2 x GH 3 (each filter consists of a pair of two matched duals)



GH3



- | | |
|-----------------------------------|------------------|
| 1.2. Type name: | MQF 10.7-1500/02 |
| 1.3. Number of poles: | 4 |
| 1.4. Operating temperature range: | -40°C to +85°C |
| 1.5. Storage temperature range: | -55°C to +85°C |

2. Electric values

2.1. Nominal centre frequency f_0 : 10.7 MHz

2.2. Pass band

- | | |
|---|------------------------|
| 2.2.1. Bandwidth between 3 dB - frequencies: | $\geq f_0 \pm 7.5$ kHz |
| 2.2.2. Ripple (at $f_0 \pm 5.0$ kHz): | ≤ 1.0 dB |
| 2.2.3. Insertion loss:
(measured on smallest attenuation in pass band) | ≤ 2.5 dB |

2.3. Stop band

- | | |
|-------------------------------------|--------------|
| 2.3.1. $f_0 \pm 25$ kHz | ≥ 40 dB |
| 2.3.2. $f_0 +300$ kHz.....+1000 kHz | ≥ 65 dB |
| 2.3.3. $f_0 -200$ kHz.....-1000 kHz | ≥ 80 dB |
| 2.3.4. Spurious responses: | ≥ 30 dB |

2.4. Terminating impedance (input and output): $3000 \Omega // 1.5$ pF

2.4.1. Coupling capacitance C_c : 5.0 pF

3. Marking: manufacturer, date code
10.7-1500/02

4. Environment conditions: Corresponding to Vectron CF001

Edited by: _____ date: _____ name: _____