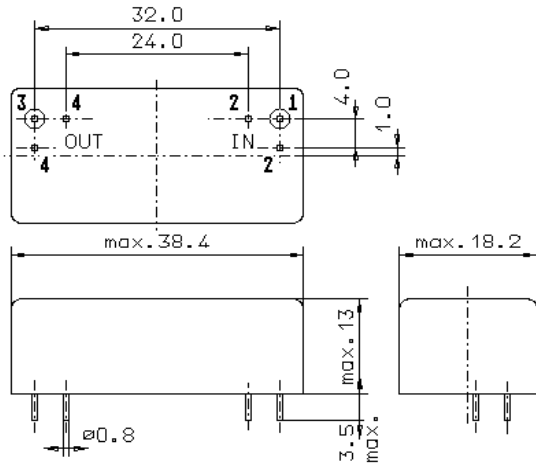


Specification for monolithic crystal filter:

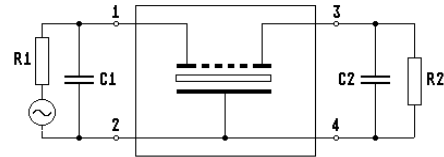
**MQF 10.7-1500/29**

1. General

1.1. Package:



GM17



- |                                   |                  |
|-----------------------------------|------------------|
| 1.2. Type name:                   | MQF 10.7-1500/29 |
| 1.3. Number of poles:             | 6                |
| 1.4. Operating temperature range: | -55°C to +85°C   |
| 1.5. Storage temperature range:   | -55°C to +85°C   |

2. Electric values

- |   |   |
|---|---|
| 2.1. Nominal centre frequency $f_0$ :                                       | 10.7 MHz                                    |
| 2.2. Pass band  |   |
| 2.2.1. Bandwidth between 3 dB - frequencies:                                | $\geq 7.5$ kHz                              |
| 2.2.2. Ripple:  | $\leq 1.5$ dB at $f_0 \pm 5.0$ kHz          |
| 2.2.3. Insertion loss:<br>( measured on smallest attenuation in pass band ) | $\leq 3.5$ dB                               |
| 2.3. Stop band  |   |
| 2.3.1. $f_0 \pm 25$ kHz   | $\geq 60$ dB                                |
| 2.3.2. Alternate Attenuation:   | $\geq 80$ dB                                |
| 2.3.3. Spurious responses:  | $\geq 60$ dB                                |
| 2.4. Terminating impedance ( input and output ):                            | $50 \Omega // 0$ pF                         |
| 3. Marking:   | manufacturer, date code<br>MQF 10.7-1500/29 |
| 4. Environment conditions:  | Corresponding to Vectron standard CF001     |

Edited by: \_\_\_\_\_ date: \_\_\_\_\_ name: \_\_\_\_\_