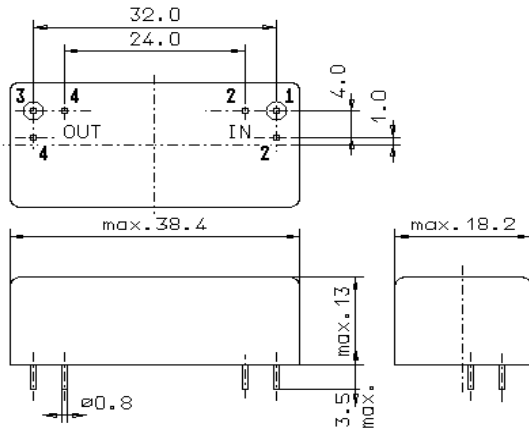


Specification for monolithic crystal filter:

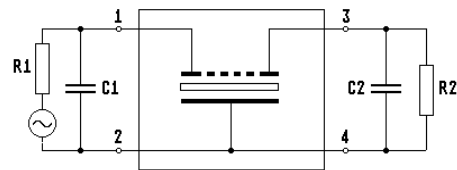
MQF 10.7-1500/53

1. General

1.1. Package:



GM17



- | | |
|-----------------------------------|------------------|
| 1.2. Type name: | MQF 10.7-1500/53 |
| 1.3. Number of poles: | 6 |
| 1.4. Operating temperature range: | -20°C to +70°C |
| 1.5. Storage temperature range: | -45°C to +85°C |

2. Electric values

- | | |
|---|---|
| 2.1. Nominal centre frequency fo: | 10.7 MHz |
| 2.2. Pass band | |
| 2.2.1. Bandwidth between 3 dB - frequencies: | $> f_o \pm 7.5$ kHz |
| 2.2.2. Ripple: | < 1.5 dB at $f_o \pm 5.0$ kHz |
| 2.2.3. Insertion loss:
(measured on smallest attenuation in pass band) | < 2.0 dB |
| 2.3. Stop band | |
| 2.3.1. $f_o \pm 25$ kHz | > 60 dB |
| 2.3.2. Alternate attenuation | > 80 dB (except spurious) |
| 2.4. Terminating impedance (input and output): | $100 \Omega // 0$ pF |
| 2.5. Maximum input power level: | +10 / +20 (working / non-damaged) |
| 2.6. Intermodulation (Inband) | |
| frequency 1: | 10.699 MHz |
| frequency 2: | 10.701 MHz |
| input power level at pin 1(input): | 0 dBm |
| IM (IP3 $> +33$ dBm): | > 66 dB (down from both 0 dBm tones) |
| 3. Marking: | manufacturer, date code
MQF 10.7-1500/53 |
| 4. Environment conditions: | Corresponding to Vectron standard CF001 |

Edited by: _____ date: _____ name: _____