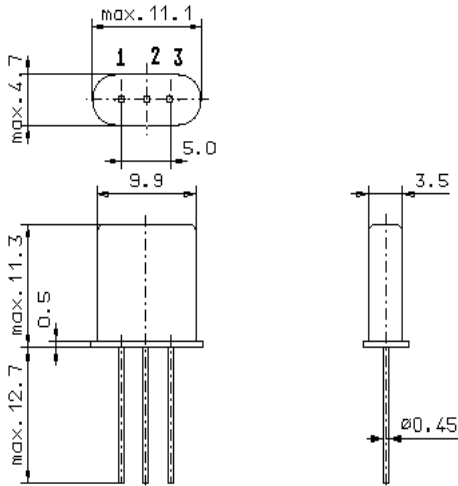


Specification for monolithic crystal filter:

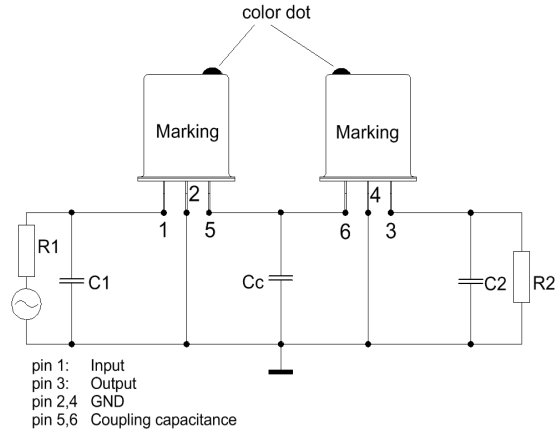
MQF 10.7-2000/11V0

1. General

1.1. Package: 2 x GH 3 (each filter consists of a pair of two matched duals)



GH3



- 1.2. Type name: MQF 10.7-2000/11V0
- 1.3. Number of poles: 4
- 1.4. Operating temperature range: -20°C to +70°C
- 1.5. Storage temperature range: -35°C to +85°C

2. Electric values

2.1. Nominal centre frequency fo: 10.7 MHz

2.2. Pass band

- 2.2.1. Bandwidth between 3 dB - frequencies: $\geq f_o \pm 10$ kHz
- 2.2.2. Ripple: ≤ 1.0 dB (at $f_o \pm 8$ kHz)
- 2.2.3. Group delay distortion: ≤ 30 μ s (at $f_o \pm 8$ kHz)
- 2.2.4. Insertion loss: ≤ 1.5 dB
(measured on smallest attenuation in pass band)

2.3. Stop band

- 2.3.1. $f_o \pm 25$ kHz ≥ 30 dB
- 2.3.2. $f_o \pm 40$ kHz ≥ 50 dB (except spurious)
- 2.3.3. $f_o \pm 60$ kHz..... ± 500 kHz ≥ 60 dB (except spurious)

2.4. Terminating impedance (input and output): 4500 Ω // 0.5 pF

2.4.1. Coupling capacitance Cc: 2.0 pF

3. Marking: manufacturer, date code
10.7-2000/11V0

4. Environment conditions: Corresponding to Vectron standard CF001

Edited by: _____ date: _____ name: _____