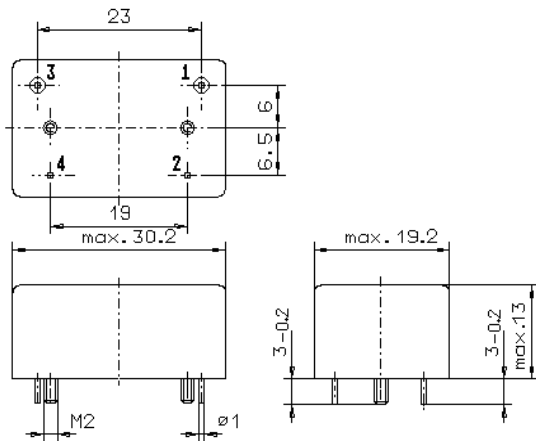


Specification for monolithic crystal filter:

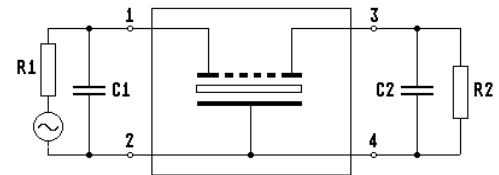
**MQF 10.7-2200/04V0**

## 1. General

### 1.1. Package:



GM15.1



- |                                   |                    |
|-----------------------------------|--------------------|
| 1.2. Type name:                   | MQF 10.7-2200/04V0 |
| 1.3. Number of poles:             | 8                  |
| 1.4. Operable temperature range:  | -55°C to +105°C    |
| 1.5. Operating temperature range: | -55°C to +95°C     |
| 1.6. Storage temperature range:   | -55°C to +105°C    |

## 2. Electric values

- |   |   |
|---|---|
| 2.1. Nominal centre frequency $f_0$ :                                       | 10.7 MHz  |
| 2.2. <b>Pass band</b>   |   |
| 2.2.1. Centre frequency $f_m$ :   | 10.7 MHz $\pm$ 500 Hz                                 |
| 2.2.2. Bandwidth between 3 dB - frequencies:                                | $\geq$ 22.0 kHz                                       |
| 2.2.3. Group delay distortion ( at $f_0 \pm 8.5$ kHz ):                     | $\leq \pm 15$ $\mu$ s related to group delay at $f_0$ |
| 2.2.4. Insertion loss:<br>( measured on smallest attenuation in pass band ) | $\leq$ 4.0 dB   |
| 2.3. <b>Stop band</b>   |   |
| 2.3.1. $f_0 \pm 25$ kHz   | $\geq$ 60 dB  |
| 2.3.2. $f_0 \pm 35$ kHz   | $\geq$ 80 dB  |
| 2.3.3. Spurious responses:  | $\geq$ 65 dB  |
| 2.4. Terminating impedance ( input and output ):                            | 9000 $\Omega \pm 5$ % // -10 pF $\pm 1$ pF            |
| 2.5. Maximum input power ( $P_{max}$ ):                                     | 10 mW   |
| 3. Marking:   | manufacturer, date code<br>MQF 10.7-2200/04V0         |
| 4. Environment conditions:  | Corresponding to Vectron standard CF001               |