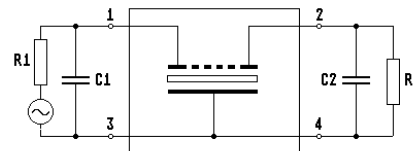
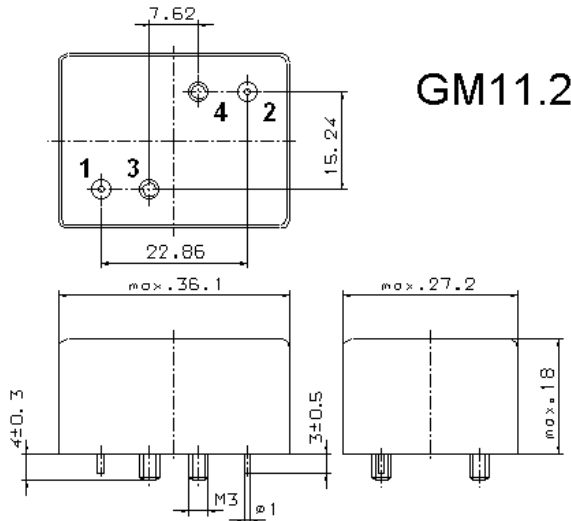


Specification for monolithic crystal filter:

MQF 10.7-2200/13

1. General

1.1. Package:



Note: Pin 2 - Output Pin 3 - Ground

- | | |
|-----------------------------------|------------------|
| 1.2. Type name: | MQF 10.7-2200/13 |
| 1.3. Number of poles: | 8 |
| 1.4. Operating temperature range: | -40°C to +70°C |
| 1.5. Storage temperature range: | -45°C to +85°C |

2. Electric values

- | | |
|---|---|
| 2.1. Nominal centre frequency f_0 : | 10.7 MHz |
| 2.2. Pass band | |
| 2.2.1. Bandwidth between 3 dB - frequencies: | $> f_0 \pm 11.0$ kHz |
| 2.2.2. Ripple: | < 1.0 dB at $f_0 \pm 8.0$ kHz |
| 2.2.3. Insertion loss:
(measured on smallest attenuation in pass band) | < 6.0 dB |
| 2.3. Stop band | |
| 2.3.1. $f_0 \pm 25$ kHz | > 60 dB |
| 2.3.2. alternate attenuation $f_0 \pm 1$ MHz | > 90 dB (except spurious) |
| 2.4. Terminating impedance (input and output): | $910 \Omega // 25$ pF |
| 2.5. Maximal input power level | 10 dBm |
| 3. Marking: | manufacturer, date code
MQF 10.7-2200/13 |
| 4. Environment conditions: | Corresponding to Vectron standard CF001 |

Edited by: _____ date: _____ name: _____