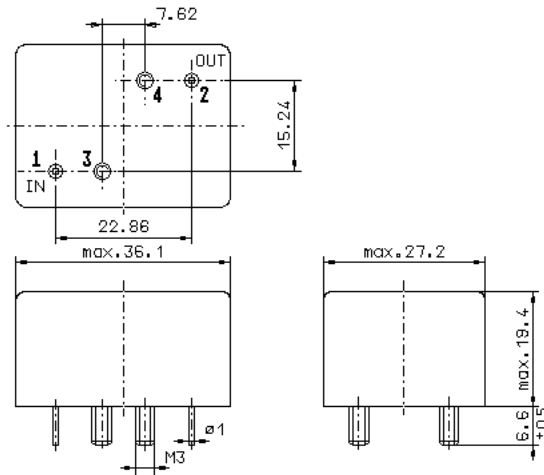


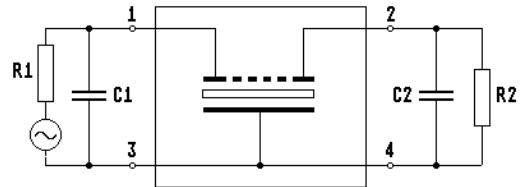
Specification for monolithic crystal filter **MQF 10.7-2400/07**

1. General

1.1. Package:



GM11.0



Note: Pin 2 - Output Pin 3 - Ground

1.2. Type name:	MQF 10.7-2400/07
1.3. Number of poles:	8
1.4. Operable temperature range:	-55°C to +80°C
1.5. Operating temperature range:	-55°C to +70°C
1.6. Storage temperature range:	-55°C to +85°C

2. Electric values

2.1. Nominal centre frequency f_0 : 10.7 MHz

2.2. Pass band

2.2.1. Centre frequency f_c (at 25°C):	10.7 MHz \pm 200 Hz
2.2.2. Bandwidth between 3 dB - frequencies:	$\geq f_0 \pm 12$ kHz
2.2.3. Ripple:	≤ 2.0 dB at $f_0 \pm 10.0$ kHz
2.2.4. Insertion loss: (measured on smallest attenuation in pass band)	≤ 4.5 dB

2.3. Stop band

2.3.1. $f_0 \pm 20$ kHz	≥ 40 dB
2.3.2. $f_0 \pm 25$ kHz	≥ 60 dB
2.3.3. Alternate attenuation ($f_0 \pm 50$ kHz)	≥ 90 dB

2.4. Terminating impedance (input and output) 2700 Ω // 25 pF

3. Marking: manufacturer, date code
MQF 10.7-2400/07

4. Environment conditions: Corresponding to Vectron standard CF001

Edited by: _____ date: _____ name: _____