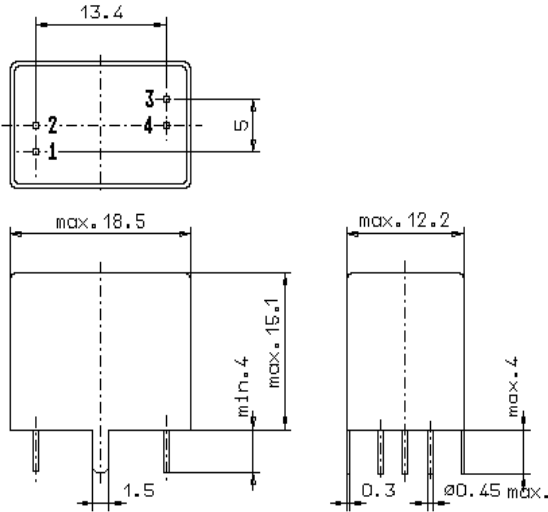


Specification for monolithic crystal filter:

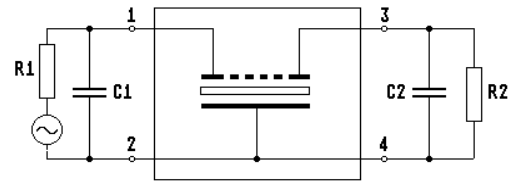
**MQF 10.7-3000 / 04**

**1. General**

1.1. Package:



GV5.1



- 1.2. Type name: MQF 10.7-3000/04
- 1.3. Number of poles: 8
- 1.4. Operating temperature range: -40°C to +85°C
- 1.5. Storage temperature range: -45°C to +85°C

**2. Electric values**

- 2.1. Nominal centre frequency fo: 10.7 MHz
- 2.2. **Pass band**
  - 2.2.1. Bandwidth between 6 dB - frequencies:  $\geq f_0 \pm 15 \text{ kHz}$
  - 2.2.2. Ripple:  $\leq 2.0 \text{ dB at } f_0 \pm 12 \text{ kHz}$
  - 2.2.3. Insertion loss:  $\leq 3.0 \text{ dB}$   
( measured on smallest attenuation in pass band )
- 2.3. **Stop band**
  - 2.3.1.  $f_0 \pm 35 \text{ kHz}$   $\geq 70 \text{ dB}$
  - 2.3.2.  $f_0 \pm 50 \text{ kHz}$   $\geq 90 \text{ dB}$
  - 2.3.3.  $f_0 \pm 50 \text{ kHz} \dots \dots \dots \pm 300 \text{ kHz}$   $\geq 90 \text{ dB ( except spurious )}$
- 2.4. Terminating impedance ( input and output ):  $4000 \Omega // -1.8 \text{ pF}$
- 2.5. Maximum input power level: +10 dBm / +30 dBm ( working / non-damaged )
- 3. Marking: manufacturer, date code  
10.7-3000/04
- 4. Environment conditions: Corresponding to Vectron standard CF001