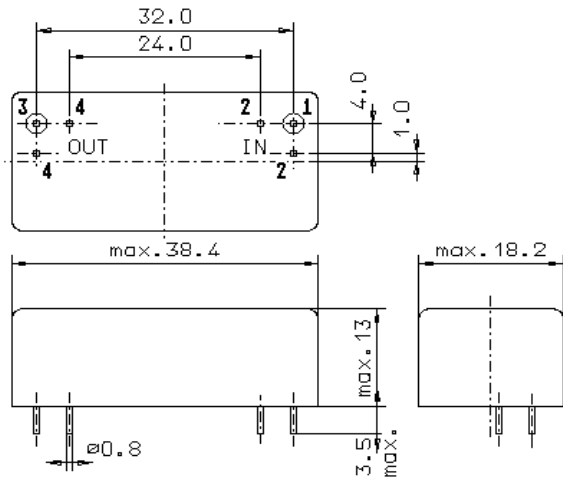


Specification for monolithic crystal filter:

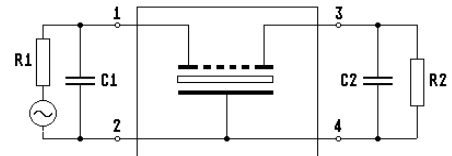
MQF 10.7-3000/12

1. General

1.1. Package:



GM17



- 1.2. Type name: MQF 10.7-3000/12
- 1.3. Number of poles: 8
- 1.4. Operating temperature range: -40°C to +85°C
- 1.5. Storage temperature range: -45°C to +85°C

2. Electric values

- 2.1. Nominal centre frequency f_0 : 10.7 MHz

2.2. Pass band

- 2.2.1. Bandwidth between 3 dB - frequencies: $\geq f_0 \pm 15$ kHz
- 2.2.2. Ripple: ≤ 2 dB at $f_0 \pm 10.0$ kHz
- 2.2.3. Insertion loss: ≤ 3.5 dB
(measured on smallest attenuation in pass band)

2.3. Stop band

- 2.3.1. $f_0 \pm 35$ kHz ≥ 70 dB
- 2.3.2. $f_0 \pm 50$ kHz..... ± 500 MHz ≥ 90 dB (except spurious responses)

- 2.4. Terminating impedance (input and output): $50 \Omega // 0$ pF
- 2.5. Maximum input power level: +10 dBm

- 3. Marking: manufacturer, date code
MQF 10.7-3000/12

- 4. Environment conditions: Corresponding to Vectron standard CF001

Edited by: _____ date: _____ name: _____