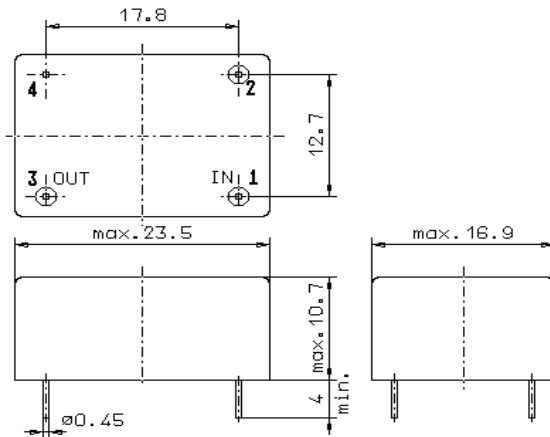


Specification for monolithic crystal filter:

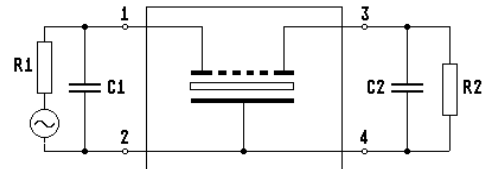
**MQF 10.7-3000/19**

**1. General**

1.1. Package:



GM20



- 1.2. Type name: MQF 10.7-3000/19
- 1.3. Number of poles: 8
- 1.4. Operating temperature range: -40°C to +80°C
- 1.5. Storage temperature range: -55°C to +105°C

**2. Electric values**

- 2.1. Nominal centre frequency fo: 10.7 MHz
- 2.2. **Pass band**
  - 2.2.1. Bandwidth between 3 dB - frequencies:  $\geq f_o \pm 15$  kHz
  - 2.2.2. Ripple:  $\leq 2.0$  dB at  $f_o \pm 10$  kHz
  - 2.2.3. Insertion loss:  $\leq 3.5$  dB  
( measured on smallest attenuation in pass band )
- 2.3. **Stop band**
  - 2.3.1.  $f_o \pm 35$  kHz:  $\geq 70$  dB
  - 2.3.2.  $f_o \pm 50$  kHz..... $\pm 500$  kHz:  $\geq 90$  dB (except spurious responses )
- 2.4. Terminating impedance ( input and output ):  $5600 \Omega // -1.0$  pF
- 2.5. Maximum input power level: +10 dBm / +25 dBm ( working / non-damaged )
- 3. Marking: manufacturer, date code  
MQF 10.7-3000/19
- 4. Environment conditions: Corresponding to Vectron standard CF001

Edited by: \_\_\_\_\_ date: \_\_\_\_\_ name: \_\_\_\_\_