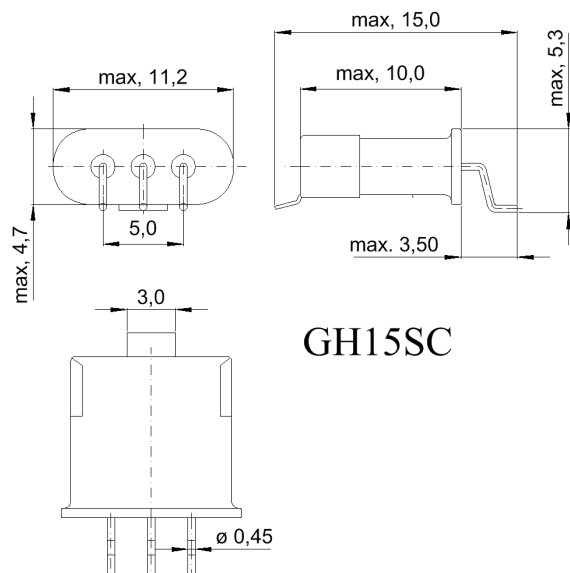


Specification for monolithic crystal filter:

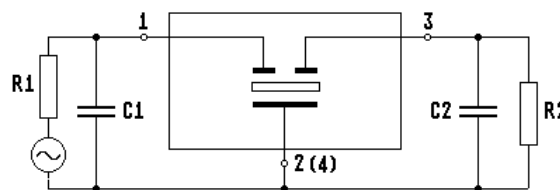
**MQF 10.7-3000 / 43**

**1. General**

1.1. Package:



**GH15SC**



- |                                   |                  |
|-----------------------------------|------------------|
| 1.2. Type name:                   | MQF 10.7-3000/43 |
| 1.3. Number of poles:             | 2                |
| 1.4. Operating temperature range: | -20°C to +70°C   |
| 1.5. Storage temperature range:   | -45°C to +85°C   |

**2. Electric values**

2.1. Nominal centre frequency fo: 10.7 MHz

**2.2. Pass band**

- |   |                         |
|---|-------------------------|
| 2.2.1. Bandwidth between 3 dB - frequencies:                                | ≥ fo ± 15 kHz           |
| 2.2.2. Ripple:  | ≤ 1.0 dB at fo ± 10 kHz |
| 2.2.3. Insertion loss:<br>( measured on smallest attenuation in pass band ) | ≤ 1.5 dB                |

**2.3. Stop band**

- |                                 |         |
|---------------------------------|---------|
| 2.3.1. fo ± 75 kHz              | > 25 dB |
| 2.3.2. fo ± 200 kHz             | > 40 dB |
| 2.3.3. fo ± 200 kHz.....500 kHz | > 40 dB |
| 2.3.4. Spurious responses       | > 4 dB  |

2.4. Terminating impedance ( input and output ): 5000 Ω // -0.5 pF

3. Marking: manufacturer, date code  
10.7-  
3000/43

4. Environment conditions: Corresponding to Vectron standard CF001

Edited by: \_\_\_\_\_ date: \_\_\_\_\_ name: \_\_\_\_\_