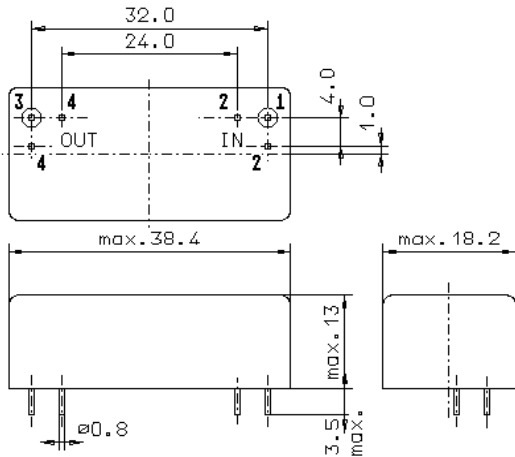


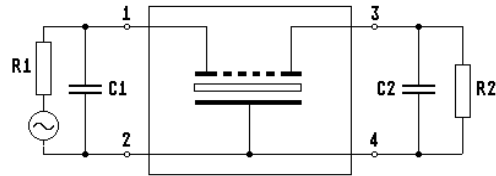
Specification for monolithic crystal filter: **MQF 10.7-4000/20**

1. General

1.1. Package:



GM17



- 1.2. Type name: MQF 10.7-4000/20
- 1.3. Number of poles: 6
- 1.4. Operating temperature range: -40°C to +70°C
- 1.5. Storage temperature range: -45°C to +85°C

2. Electric values

- 2.1. Nominal centre frequency f_0 : 10.7 MHz

2.2. Pass band

- 2.2.1. Bandwidth between 3 dB - frequencies: $\geq f_0 \pm 20$ kHz
- 2.2.2. Ripple: < 1.5 dB at $f_0 \pm 15$ kHz
- 2.2.3. Insertion loss: < 6.0 dB
(measured on smallest attenuation in pass band)

2.3. Stop band

- 2.3.1. $f_0 \pm 50$ kHz: > 10 dB
- 2.3.2. $f_0 \pm 70$ kHz: > 40 dB
- 2.3.3. $f_0 \pm 90$ kHz.....300 kHz: > 60 dB
- 2.3.4. Spurious responses in the range $f_0 \pm 70$ kHz.....300 kHz: > 35 dB

- 2.4. Terminating impedance (input and output): $900 \Omega // 25$ pF

- 3. Marking: manufacturer, date code
MQF 10.7-4000/20

- 4. Environment conditions: Corresponding to Vectron standard CF001

Edited by: _____ date: _____ name: _____