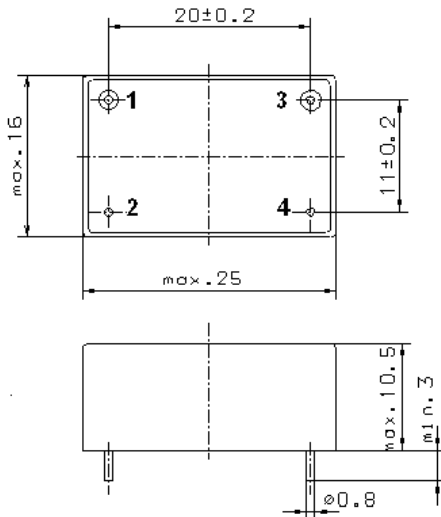


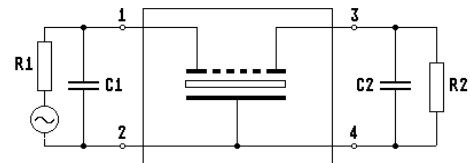
Specification for monolithic crystal filter: **MQF 10.7-5000/19**

## 1. General

### 1.1. Package:



GM47.1



- |                                   |                  |
|-----------------------------------|------------------|
| 1.2. Type name:                   | MQF 10.7-5000/19 |
| 1.3. Number of poles:             | 4                |
| 1.4. Operating temperature range: | -40°C to +75°C   |
| 1.5. Storage temperature range:   | -45°C to +85°C   |

## 2. Electric values

- |  |   |
|--|---|
| 2.1. Nominal centre frequency $f_0$ :                                      | 10.7 MHz                                    |
| 2.2. <b>Pass band</b>  |   |
| 2.2.1 Bandwidth between 3 dB - frequencies:                                | $\geq f_0 \pm 25$ kHz                       |
| 2.2.2 Ripple:  | $\leq 1.5$ dB at $f_0 \pm 15$ kHz           |
| 2.2.3 Insertion loss:<br>( measured on smallest attenuation in pass band ) | $\leq 6.0$ dB                               |
| 2.3. <b>Stop band</b>  |   |
| 2.3.1. $f_0 \pm 80$ kHz:   | $> 35$ dB                                   |
| 2.3.2. Alternate attenuation:  | $> 65$ dB                                   |
| 2.3.3. Spurious responses $f_0 + 200$ kHz...+500 kHz                       | $> 35$ dB                                   |
| 2.4. Terminating impedance ( input and output ):                           | $50 \Omega // 0$ pF                         |
| 2.5. Maximum input power (working / non-damaged ):                         | 0 / +15 dBm                                 |
| 3. Marking:  | manufacturer, date code<br>MQF 10.7-5000/19 |
| 4. Environment conditions:   | Corresponding to Vectron standard CF001     |

Edited by: \_\_\_\_\_ date: \_\_\_\_\_ name: \_\_\_\_\_