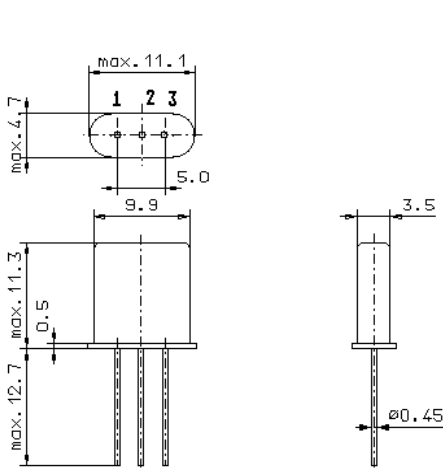


Specification for monolithic crystal filter:

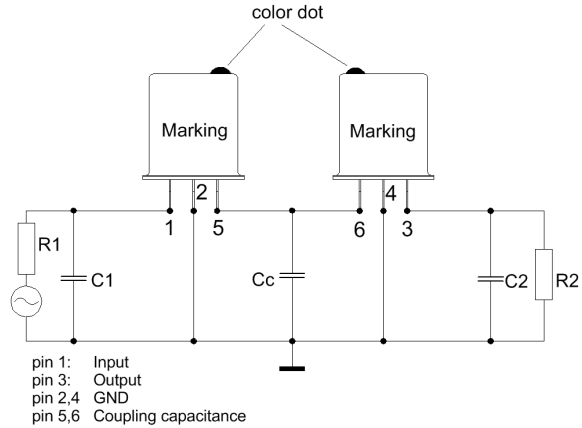
MQF 16.9 - 2000 / 02

1. General

1.1. Package: 2 x GH 3



GH3



- | | |
|-----------------------------------|------------------|
| 1.2. Type name: | MQF 16.9-2000/02 |
| 1.3. Number of poles: | 4 |
| 1.4. Operable temperature range: | -30°C to +80°C |
| 1.5. Operating temperature range: | -20°C to +70°C |
| 1.6. Storage temperature range: | -40°C to +85°C |

2. Electric values

2.1. Nominal centre frequency fo: 16.9 MHz

2.2. Pass band

- | | |
|---|------------------------------------|
| 2.2.1. Bandwidth between 3 dB - frequencies: | $\geq f_o \pm 10.0$ kHz |
| 2.2.2. Ripple: | ≤ 1.0 dB at $f_o \pm 7.5$ kHz |
| 2.2.3. Insertion loss:
(measured on smallest attenuation in pass band) | ≤ 2.0 dB |

2.3. Stop band

- | | |
|---------------------------|--------------|
| 2.3.1. $f_o \pm 34$ kHz | ≥ 35 dB |
| 2.3.2. $f_o \pm 910$ kHz | ≥ 60 dB |
| 2.3.3. Spurious responses | ≥ 25 dB |

2.4. Terminating impedance (input and output): 1500 Ω // 0.0 pF.....0.5 pF

2.4.1. Coupling capacitance Cc: 6.0 pF.....6.5 pF

3. Marking: manufacturer, date code
16.9-2000/02

4. Environment conditions: Corresponding to Vectron standard CF001

Edited by: _____ date: _____ name: _____