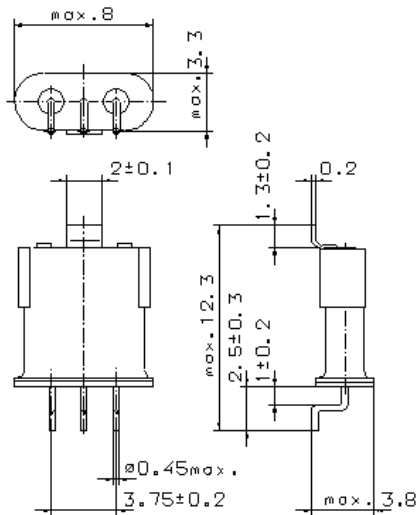


Specification for monolithic crystal filter:

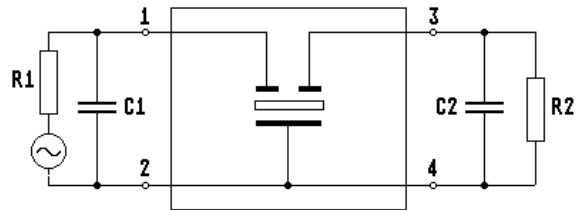
MQF 20.0-0300/01

1. General

1.1. Package:



GH9S1



- | | |
|-----------------------------------|------------------|
| 1.2. Type name: | MQF 20.0-0300/01 |
| 1.3. Number of poles: | 2 |
| 1.4. Operating temperature range: | -15°C to +65°C |
| 1.5. Storage temperature range: | -25°C to +70°C |

2. Electric values

- | | |
|---|---|
| 2.1. Nominal centre frequency f_0 : | 20.0 MHz |
| 2.2. Pass band | |
| 2.2.1. Centre frequency f_c : | 20.0 MHz \pm 300 Hz |
| 2.2.2. Bandwidth between 3 dB - frequencies: | $\geq f_c \pm 1.25$ kHz
$\leq f_c \pm 1.75$ kHz |
| 2.2.3. Ripple: | ≤ 2.0 dB at $f_0 \pm 1.0$ kHz |
| 2.2.4. Insertion loss:
(measured on smallest attenuation in pass band) | ≤ 2.5 dB |
| 2.3. Stop band | |
| 2.3.1. $f_0 \pm 10$ kHz | ≥ 30 dB |
| 2.3.2. $f_0 \pm 10$ kHz..... ± 5 MHz | ≥ 30 dB |
| 2.3.3. Spurious responses: | ≥ 20 dB ($f_0 \pm 100$ kHz..... ± 500 kHz) |
| 2.4. Terminating impedance R/C (input and output): | 200 Ω // 2.0 pF |
| 3. Marking: | manufacturer, date code
20.0-
0300/01 |
| 4. Environment conditions: | Corresponding to Vectron standard CF001 |

Edited by: _____ date: _____ name: _____