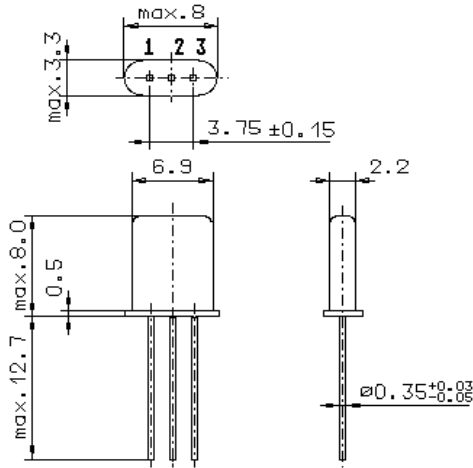


Specification for monolithic crystal filter:

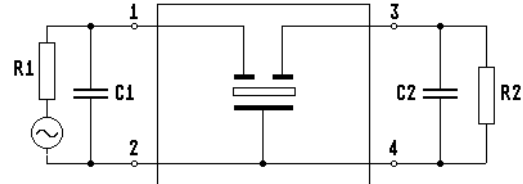
MQF 20.0-0500/01

1. General

1.1. Package:



GH9



- | | |
|-----------------------------------|------------------|
| 1.2. Type name: | MQF 20.0-0500/01 |
| 1.3. Number of poles: | 2 |
| 1.4. Operable temperature range: | -25°C to +80°C |
| 1.5. Operating temperature range: | -20°C to +70°C |
| 1.6. Storage temperature range: | -35°C to +85°C |

2. Electric values

- | | |
|---|---|
| 2.1. Nominal centre frequency fo: | 20.0 MHz |
| 2.2. Pass band | |
| 2.2.1. Bandwidth between 3 dB - frequencies: | ≥ fo ± 2.5 kHz |
| 2.2.2. Ripple: | ≤ 1.0 dB at fo ± 1.8 kHz |
| 2.2.3. Insertion loss:
(measured on smallest attenuation in pass band) | ≤ 1.0 dB |
| 2.3. Stop band | |
| 2.3.1. fo ± 40 kHz..... ± 5 MHz | ≥ 40 dB |
| 2.3.2. Spurious responses: | ≥ 20 dB |
| 2.4. Terminating impedance R/C (input and output): | 850 Ω // 8.0 pF |
| 3. Marking: | manufacturer, date code
20.0-0500/01 |
| 4. Environment conditions: | Corresponding to Vectron standard CF001 |

Edited by: _____ date: _____ name: _____