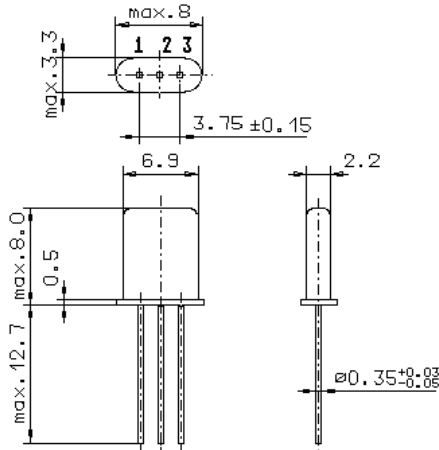


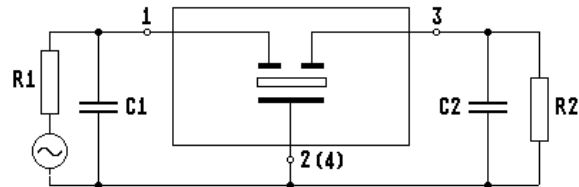
Specification for monolithic crystal filter: **MQF 20.525-4000/01**

1. General

1.1. Package:



GH9



- |                                   |                    |
|-----------------------------------|--------------------|
| 1.2. Type name:                   | MQF 20.525-4000/01 |
| 1.3. Number of poles:             | 2                  |
| 1.4. Operating temperature range: | -40°C to +85°C     |
| 1.5. Storage temperature range:   | -55°C to +85°C     |

2. Electric values

- |  |                                  |
|--|----------------------------------|
| 2.1. Nominal centre frequency fo:                  | 20.525 MHz                       |
| 2.2. Pass band                                     |                                  |
| 2.2.1. Bandwidth between 3 dB - frequencies:       | > fo ± 20.0 kHz                  |
| 2.2.2. Ripple at fo ± 14.0 kHz:                    | < 1.0 dB ( peak to peak )        |
| 2.2.3. Insertion loss:                             | < 2.0 dB                         |
| ( measured on smallest attenuation in pass band )  |                                  |
| 2.3. Stop band                                     |                                  |
| 2.3.1. fo ± 70 kHz                                 | > 15 dB                          |
| 2.3.2. fo ± 150 kHz                                | > 30 dB                          |
| 2.3.3. Alternate attenuation                       | > 30 dB ( except spurious )      |
| 2.3.4. Spurious responses fo+150.....fo+800 kHz    | > 15 dB                          |
| 2.4. Terminating impedance R/C (input and output): | 4800 Ω // - 0.6 pF               |
| 2.5. Maximum input power level                     | +5/+15 ( working / non-damaged ) |

- |                            |   |
|----------------------------|---|
| 3. Marking:                | VI date code<br>20.525-<br>4000/01      |
| 4. Environment conditions: | Corresponding to Vectron standard CF001 |

Edited by: \_\_\_\_\_ date: \_\_\_\_\_ name: \_\_\_\_\_