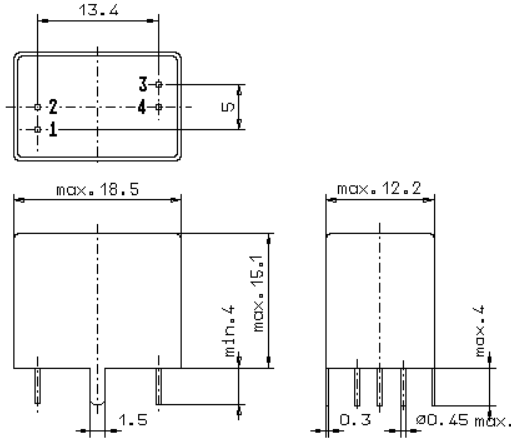


Specification for monolithic crystal filter:

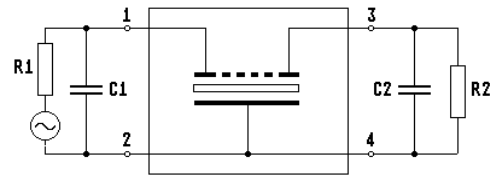
MQF 21.4-0700/07

1. General

1.1. Package:



GV5.1



- 1.2. Type name: MQF 21.4-0700/07
- 1.3. Number of poles: 10
- 1.4. Operating temperature range: -20°C to +70°C
- 1.5. Storage temperature range: -55°C to +105°C

2. Electric values

- 2.1. Nominal centre frequency f_0 : 21.4 MHz

2.2. Pass band

- 2.2.1. Bandwidth between 6 dB - frequencies: $\geq f_0 \pm 3.5$ kHz
- 2.2.2. Ripple: ≤ 2.0 dB at $f_0 \pm 2.1$ kHz
- 2.2.3. Insertion loss: ≤ 4.0 dB
(measured on smallest attenuation in pass band)

2.3. Stop band

- 2.3.1. $f_0 \pm 6.5$ kHz ≥ 60 dB
- 2.3.2. $f_0 \pm 20$ kHz.....5 MHz ≥ 90 dB

- 2.4. Terminating impedance (input and output): $850 \Omega // 6.0$ pF

- 3. Marking: manufacturer, date code
21.4-0700/07

- 4. Environment conditions: Corresponding to Vectron standard CF001

Edited by: _____ date: _____ name: _____