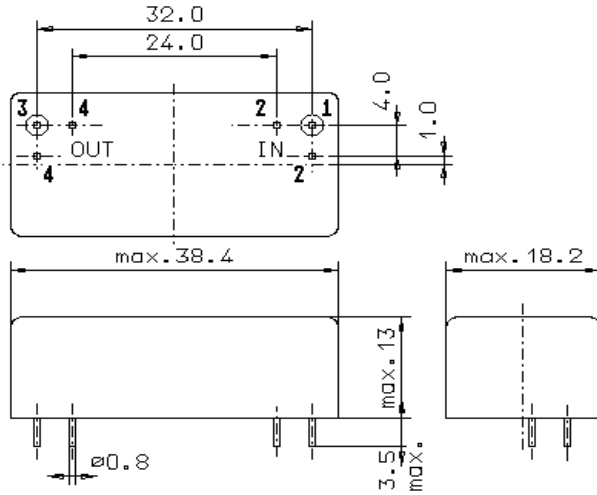


Specification for monolithic crystal filter:

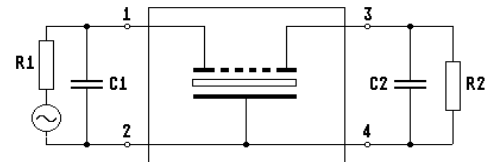
**MQF 21.4-0700/11**

**1. General**

**1.1. Package:**



GM17



- |                                   |                  |
|-----------------------------------|------------------|
| 1.2. Type name:                   | MQF 21.4-0700/11 |
| 1.3. Number of poles:             | 12               |
| 1.4. Operable temperature range:  | -40°C to +90°C   |
| 1.5. Operating temperature range: | -40°C to +90°C   |
| 1.6. Storage temperature range:   | -55°C to +105°C  |

**2. Electric values**

2.1. Nominal centre frequency  $f_0$ : 21.4 MHz

**2.2. Pass band**

- |  |                                    |
|--|------------------------------------|
| 2.2.1. Bandwidth between 6 dB - frequencies:           | $\geq f_0 \pm 3.45$ kHz            |
| 2.2.2. Ripple:   | $\leq 2.0$ dB at $f_0 \pm 2.0$ kHz |
| 2.2.3. Insertion loss:                                 | $\leq 5.0$ dB                      |
| ( measured on smallest attenuation in pass band )      |                                    |
| 2.2.4. Level linearity at levels of -40 dBm to +5 dBm: | $\leq 0.5$ dB                      |

**2.3. Stop band**

- |  |                                  |
|--|----------------------------------|
| 2.3.1. $f_0 \pm 6.68$ kHz                                    | $\geq 60$ dB                     |
| 2.3.2. $f_0 \pm 10$ kHz..... $\pm 5$ MHz                     | $\geq 80$ dB ( except spurious ) |
| 2.3.3. Spurious responses $f_0 \pm 10$ kHz..... $\pm 15$ kHz | $\geq 60$ dB                     |

- |  |                     |
|--|---------------------|
| 2.4. Terminating impedance ( input and output ): | $50 \Omega // 0$ pF |
| 2.5. Input power level:                          | $\leq +5$ dBm       |

3. Marking: manufacturer, date code  
MQF 21.4-0700/11 or OEM-marking

4. Environment conditions: Corresponding to Vectron standard CF001