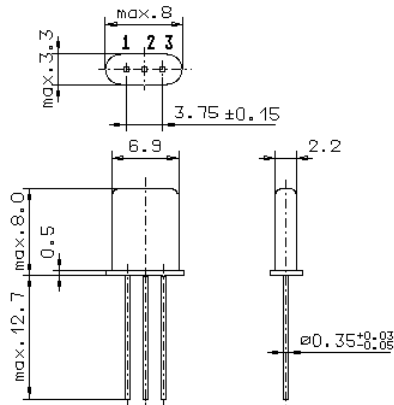


Specification for monolithic crystal filter:

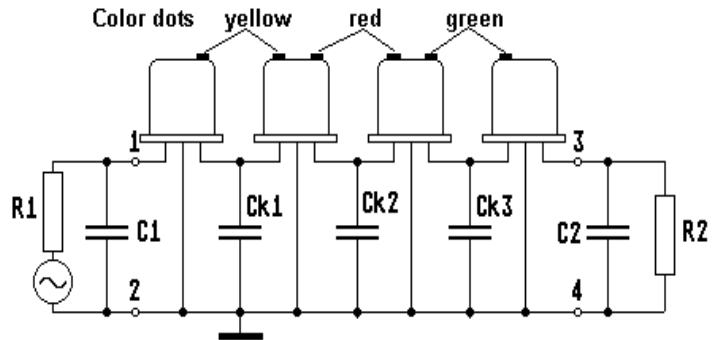
**MQF 21.4-0900/06**

## 1. General

1.1. Package: ( each filter consists of 4 matched duals in GH9 package )



GH9



- |                                   |                  |
|-----------------------------------|------------------|
| 1.2. Type name:                   | MQF 21.4-0900/06 |
| 1.3. Number of poles:             | 8                |
| 1.4. Operating temperature range: | -20°C to +70°C   |
| 1.5. Storage temperature range:   | -45°C to +85°C   |

## 2. Electric values

2.1. Nominal centre frequency fo: 21.4 MHz

### 2.2. Pass band

- |   |  |
|---|--|
| 2.2.1. Bandwidth between 3 dB - frequencies:                                | $\geq f_o \pm 4.5$ kHz                 |
| 2.2.2. Ripple in pass band:   | $\leq 1.0$ dB peak to peak             |
| 2.2.3. Differential group delay   | $\leq 30$ $\mu$ s at $f_o \pm 2.8$ kHz |
|   | $\leq 10$ $\mu$ s at $f_o \pm 1.6$ kHz |
| 2.2.4. Insertion loss:<br>( measured on smallest attenuation in pass band ) | $\leq 3.0$ dB                          |

### 2.3. Stop band

- |  |   |
|--|---|
| 2.3.1. $f_o \pm 12.5$ kHz  | $\geq 60$ dB  |
| 2.3.2. Alternate attenuation   | $\geq 80$ dB  |
| 2.4. Terminating impedance ( input and output ):<br>Coupling capacitances: | 1600 $\Omega$ // 0.5 pF<br>Ck1 = Ck3 = 10.4 pF<br>Ck2 = 12.8 pF |
| 2.5. Maximum input power level:  | +10 dBm / +25 dBm ( working / non damaged )                     |

3. Marking: manufacturer, date code  
MQF 21.4-0900/06

4. Environment conditions: Corresponding to Vectron standard CF001

Edited by: \_\_\_\_\_ date: \_\_\_\_\_ name: \_\_\_\_\_