

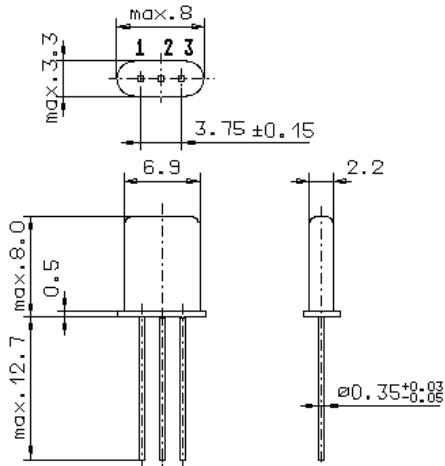
Specification for monolithic crystal filter:

MQF 21.4-1000/15

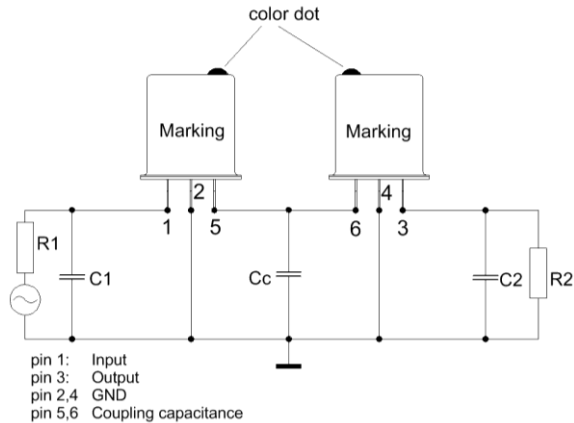
1. General

1.1. Package: 2 x GH9

- filter input is marked with additional dot, each filter consists of a pair of two matched duals



GH9



- | | |
|-----------------------------------|------------------|
| 1.2. Type name: | MQF 21.4-1000/15 |
| 1.3. Number of poles: | 4 |
| 1.4. Operating temperature range: | -20°C to +70°C |
| 1.5. Storage temperature range: | -45°C to +85°C |

2. Electric values

- | | |
|---|--|
| 2.1. Nominal centre frequency f_0 : | 21.4 MHz |
| 2.2. Pass band | |
| 2.2.1. Bandwidth between 3 dB - frequencies: | $> f_0 \pm 4.25$ kHz
$< f_0 \pm 5.75$ kHz |
| 2.2.2. Ripple: | Gaussian |
| 2.2.3. Group delay distortion: | < 5.0 μ s at $f_0 \pm 5.0$ kHz |
| 2.2.4. Insertion loss:
(measured on smallest attenuation in pass band) | ≤ 3.0 dB |
| 2.3. Stop band | |
| 2.3.1. $f_0 \pm 25$ kHz | ≥ 40 dB |
| 2.3.2. Alternate attenuation: | ≥ 60 dB (except spurious) |
| 2.4. Terminating impedance: | |
| input (marked with additional dot): | $1600 \Omega // -0.3$ pF |
| output: | $1850 \Omega // -0.7$ pF |
| 2.4.1. Coupling capacitance C_c : | 17.4 pF |
| 3. Marking: | manufacturer, date code
21.4-1000/15 |
| 4. Environment conditions: | Corresponding to Vectron standard CF001 |