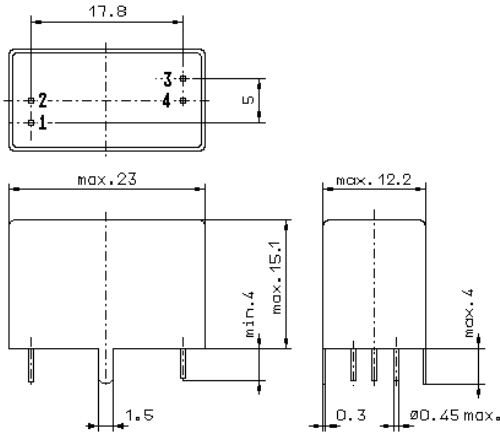


Specification for monolithic crystal filter:

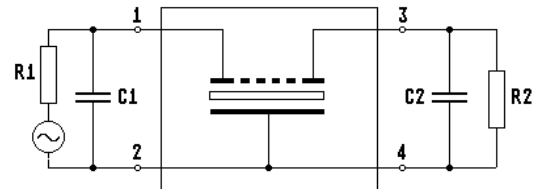
MQF 21.4-1200/30

1. General

1.1. Package:



GV6.2



- 1.2. Type name: MQF 21.4-1200/30
- 1.3. Number of poles: 4
- 1.4. Operating temperature range: -20°C to +50°C
- 1.5. Storage temperature range: -55°C to +105°C

2. Electric values

- 2.1. Nominal centre frequency fo: 21.4 MHz
- 2.2. **Pass band**
 - 2.2.1. Bandwidth between 3 dB - frequencies: $\geq f_o \pm 6.0$ kHz
 - 2.2.2. Ripple: ≤ 1.0 dB at $f_o \pm 4.8$ kHz
 - 2.2.3. Insertion loss: ≤ 3.0 dB
(measured on smallest attenuation in pass band)
 - 2.3.4. Return loss (at $f_o \pm 4.8$ kHz): ≥ 9.5 dB
- 2.3. **Stop band**
 - 2.3.1. $f_o \pm 25$ kHz: ≥ 50 dB
 - 2.3.2. $f_o \pm 200$ kHz: ≥ 80 dB
 - 2.3.3. Alternate attenuation: ≥ 60 dB (except spurious)
- 2.4. Terminating impedance (input and output): $50 \Omega // 0$ pF
- 2.5. **Intermodulation**
 - test tones 1, 2: $f_o \pm 200$ kHz / $f_o \pm 400$ kHz
 - input power level: -10 dBm
 - 3-rd order intermodulation distortion: > 85 dB (down from either of the two -10 dBm input test tones)
- 3. Marking: manufacturer, date code
MQF 21.4-1200/30
- 4. Environment conditions: Corresponding to Vectron standard CF001

Edited by: _____ date: _____ name: _____