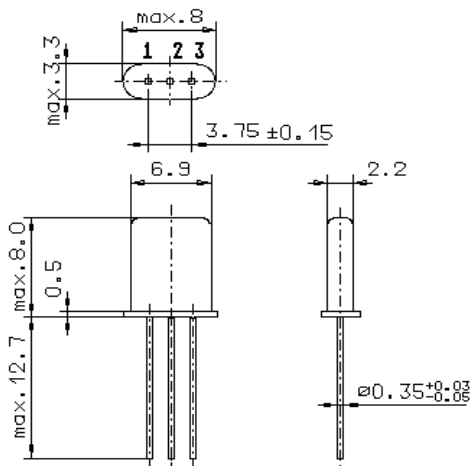


Specification for monolithic crystal filter:

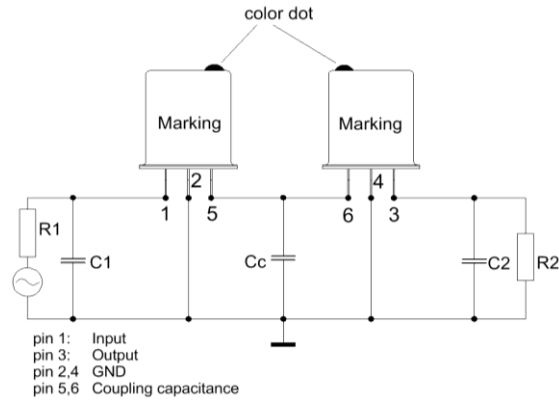
MQF 21.4-1500/02

1. General

1.1. Package: 2 x GH 9



GH9



- | | |
|-----------------------------------|------------------|
| 1.2. Type name: | MQF 21.4-1500/02 |
| 1.3. Number of poles: | 4 |
| 1.4. Operable temperature range: | -30°C to +80°C |
| 1.5. Operating temperature range: | -25°C to +70°C |
| 1.6. Storage temperature range: | -55°C to +80°C |

2. Electric values

2.1. Nominal centre frequency f_0 : 21.4 MHz

2.2. Pass band

- | | |
|---|------------------------------------|
| 2.2.1. Bandwidth between 3 dB - frequencies: | $\geq f_0 \pm 7.5$ kHz |
| 2.2.2. Ripple: | ≤ 1.0 dB at $f_0 \pm 6.0$ kHz |
| 2.2.3. Insertion loss:
(measured on smallest attenuation in pass band) | ≤ 2.5 dB |

2.3. Stop band

- | | |
|--|-------------------------|
| 2.3.1. $f_0 \pm 25$ kHz | ≥ 40 dB |
| 2.4. Terminating impedance R/C (input and output): | $1600 \Omega // 2.0$ pF |
| 2.4.1. Coupling capacitance C_c : | 7.0 pF |

3. Marking: manufacturer, date code
21.4-1500/02

4. Environment conditions: Corresponding to Vectron standard CF001

Edited by: _____ date: _____ name: _____