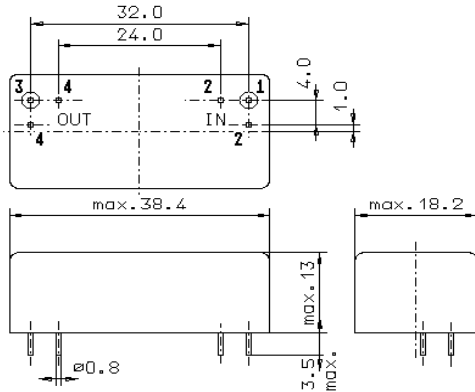


Specification for monolithic crystal filter:

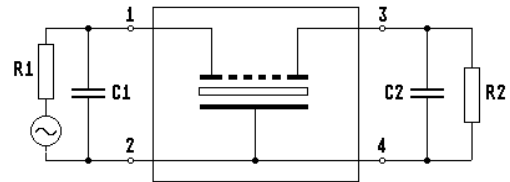
MQF 21.4-1500/24V0

1. General

1.1. Package:



GM17



- | | |
|-----------------------------------|--------------------|
| 1.2. Type name: | MQF 21.4-1500/24V0 |
| 1.3. Number of poles: | 6 |
| 1.4. Operable temperature range: | -20°C to +85°C |
| 1.5. Operating temperature range: | -10°C to +0°C |
| 1.6. Storage temperature range: | -40°C to +90°C |

2. Electric values

- | | |
|---|---|
| 2.1. Nominal centre frequency fo: | 21.4 MHz |
| 2.2. Pass band | |
| 2.2.1. Centre frequency fc: | 21.4 MHz ± 750 Hz |
| 2.2.2. Bandwidth between 3 dB - frequencies: | ≥ fc ± 7.5 kHz |
| 2.2.3. Reflection loss: | ≥ 10 dB at fc ± 6.0 kHz |
| 2.2.4. Ripple: | ≤ 1.5 dB at fc ± 6.0 kHz |
| 2.2.5. Insertion loss:
(measured on smallest attenuation in pass band) | ≤ 4.0 dB |
| 2.3. Stop band | |
| 2.3.1. fc ± 20 kHz | ≥ 60 dB |
| 2.3.2. fc ± 150 kHz.....± 5 MHz | ≥ 90 dB |
| 2.4. Terminating impedance (input and output): | 50 Ω ± 10 % // 0 pF |
| 2.5 Intermodulation | |
| IP 3: | >30 dBm |
| frequency 1: | 21.370 MHz / 21.385 MHz |
| frequency 2: | 21.415 MHz / 21.430 MHz |
| input power: | 0 dBm |
| IM: | > 60 dB |
| 3. Marking: | manufacturer, date code
MQF 21.4-1500/24V0 |
| 4. Environment conditions: | Corresponding to Vectron standard CF001 |