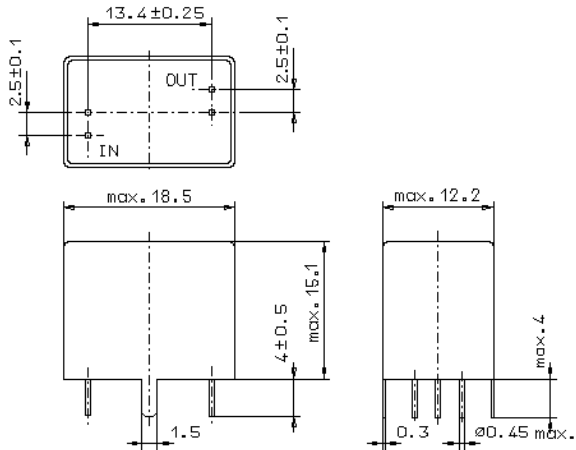


Specification for monolithic crystal filter:

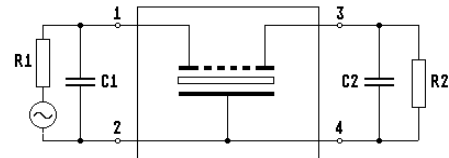
MQF 21.4-1500 / 31
2722 172 90097

1. General

1.1. Package:



GV5.4



- 1.2. Type name: MQF 21.4-1500/31
- 1.3. Number of poles: 8
- 1.4. Operable temperature range: -30°C to +80°C
- 1.5. Operating temperature range: -25°C to +70°C
- 1.6. Storage temperature range: -55°C to +80°C

2. Electric values

2.1. Nominal centre frequency fo: 21.4 MHz

2.2. Pass band

- 2.2.1. Bandwidth between 3 dB - frequencies: $\geq f_o \pm 7.5 \text{ kHz}$
- 2.2.2. Ripple: $\leq 2.0 \text{ dB at } f_o \pm 6.0 \text{ kHz}$
- 2.2.3. Insertion loss: $\leq 3.0 \text{ dB}$
 (measured on smallest attenuation in pass band)

2.3. Stop band

- 2.3.1. $f_o \pm 17.5 \text{ kHz}$ $\geq 65 \text{ dB}$
- 2.3.2. $f_o \pm 25 \text{ kHz} \dots \dots \dots \pm 300 \text{ kHz}$ $\geq 90 \text{ dB}$

2.4. Terminating impedance (input and output): $1600 \Omega // 1.5 \text{ pF}$

3. Marking: manufacturer, date code
 21.4-1500/31

4. Environment conditions: Corresponding to Vectron standard CF001

5. Filters are Pb-free and 2002 /95 / EC RoHS compliant

Edited by: _____ date: _____ name: _____