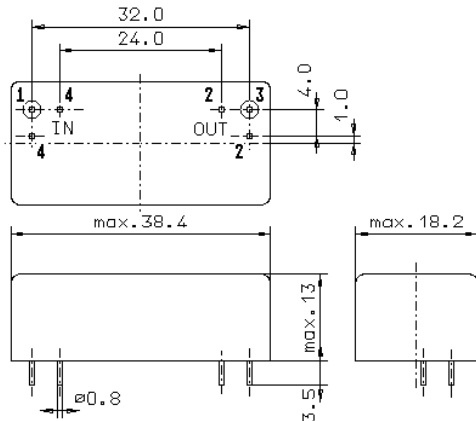


Specification for monolithic crystal filter:

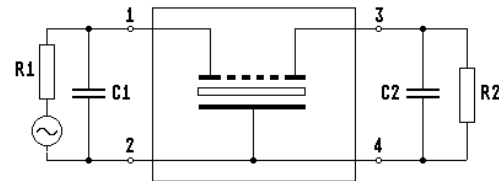
MQF 21.4-1500/61V0

1. General

1.1. Package:



GM17.1



- | | |
|-----------------------------------|--------------------|
| 1.2. Type name: | MQF 21.4-1500/61V0 |
| 1.3. Number of poles: | 8 |
| 1.4. Operable temperature range: | -20°C to +85°C |
| 1.5. Operating temperature range: | -10°C to +70°C |
| 1.6. Storage temperature range: | -40°C to +90°C |

2. Electric values

- | | |
|-----------------------------------|----------|
| 2.1. Nominal centre frequency fo: | 21.4 MHz |
|-----------------------------------|----------|

2.2. Pass band

- | | |
|---|--|
| 2.2.1. Bandwidth between 3 dB - frequencies: | $\geq f_o \pm 7.5$ kHz |
| 2.2.2. Ripple: | ≤ 2.0 dB at $f_o \pm 5.0$ kHz |
| 2.2.3. Insertion loss:
(measured on smallest attenuation in pass band) | ≤ 4.0 dB |
| 2.2.4. Group delay distortion: | ≤ 80 μ s at $f_o \pm 7.5$ kHz |

2.3. Stop band

- | | |
|---|----------------------------------|
| 2.3.1. $f_o \pm 22.5$ kHz | ≥ 60 dB |
| 2.3.2. $f_o \pm 500$ kHz..... ± 5 MHz | ≥ 90 dB (except spurious) |

- | | |
|--|---------------------|
| 2.4. Terminating impedance (input and output): | 50 Ω // 0 pF |
|--|---------------------|

2.5. Intermodulation (IP 3: > 30 dBm)

- | | |
|-------------------------|--|
| test tones frequencies: | 21.415 MHz / 21.430 MHz |
| input power: | 0 dBm |
| IM: | > 60 dB down from either of the two 0 dBm input test tones |

- | | |
|-------------|---|
| 3. Marking: | manufacturer, date code
MQF 21.4-1500/61V0 |
|-------------|---|

- | | |
|----------------------------|---|
| 4. Environment conditions: | Corresponding to Vectron standard CF001 |
|----------------------------|---|

Edited by: _____ date: _____ name: _____