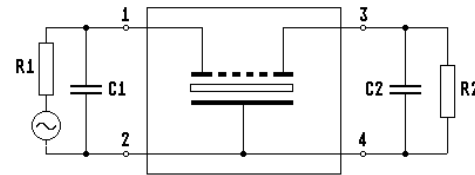
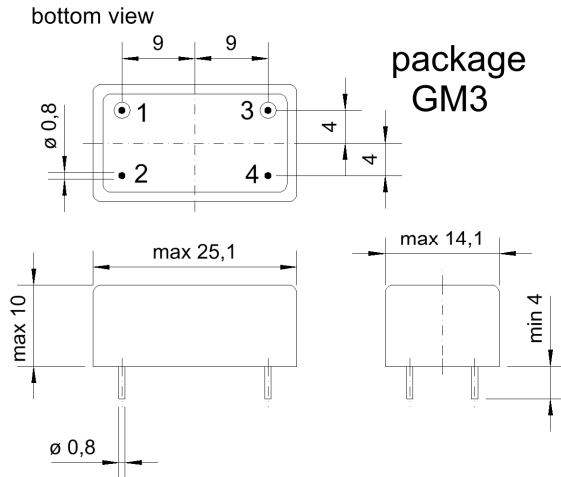


Specification for monolithic crystal filter:

**MQF 21.4-1800/08**

## 1. General

### 1.1. Package:



1.2. Type name:	MQF 21.4-1800/08
1.3. Number of poles:	6
1.4. Operable temperature range:	-30°C to +80°C
1.5. Operating temperature range:	-20°C to +70°C
1.6. Storage temperature range:	-45°C to +85°C

## 2. Electric values

2.1. Nominal centre frequency $f_0$ :	21.4 MHz
<b>2.2. Pass band</b>	
2.2.1. Bandwidth between 3 dB - frequencies:	$\geq f_0 \pm 9.0$ kHz
2.2.2. Ripple:	$\leq 3.0$ dB at $f_0 \pm 9.0$ kHz
2.2.3. Insertion loss: ( measured on smallest attenuation in pass band )	$\leq 4.0$ dB
2.2.4. Group delay ( absolute ):	$\leq 60$ $\mu$ s at $f_0 \pm 9.0$ kHz
2.2.5. Group delay distortion:	$\leq 5$ $\mu$ s at $f_0 \pm 9.0$ kHz
<b>2.3. Stop band</b>	
2.3.1. $f_0 \pm 40$ kHz	$\geq 60$ dB
2.3.2. $f_0 \pm 50$ kHz	$\geq 70$ dB
2.3.3. alternate attenuation:	$\geq 70$ dB
2.3.4. Spurious responses:	$\geq 40$ dB
2.4. Terminating impedance ( input / output ):	50 $\Omega$ // 0 pF
3. Marking:	manufacturer, date code MQF 21.4-1800/08
4. Environment conditions:	Corresponding to Vectron standard CF001

Edited by: \_\_\_\_\_ date: \_\_\_\_\_ name: \_\_\_\_\_