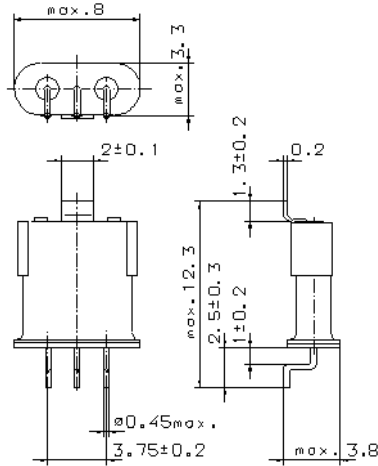


Specification for monolithic crystal filter:

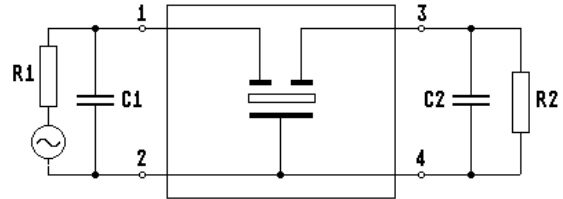
MQF 21.4-1800/10

1. General

1.1. Package:



GH9S1



- | | |
|-----------------------------------|------------------|
| 1.2. Type name: | MQF 21.4-1800/10 |
| 1.3. Number of poles: | 2 |
| 1.4. Operating temperature range: | -20°C to +70°C |
| 1.5. Storage temperature range: | -55°C to +85°C |

2. Electric values

- | | |
|---|---|
| 2.1. Nominal centre frequency fo: | 21.4 MHz |
| 2.2. Pass band | |
| 2.2.1. Bandwidth between 3 dB - frequencies: | ≥ fo ± 9.0 kHz |
| 2.2.2. Ripple: | ≤ 1.0 dB at fo ± 5.0 kHz |
| 2.2.3. Insertion loss:
(measured on smallest attenuation in pass band) | ≤ 2.0 dB |
| 2.3. Stop band | |
| 2.3.1. fo ± 26 kHz.....± 450 kHz | ≥ 15 dB (except spurious) |
| 2.3.2. fo ± 450 kHz | ≥ 30 dB |
| 2.4. Terminating impedance R//C (input and output): | 2500 Ω // 2.0 pF |
| 3. Marking: | manufacturer, date code
21.4-1800/10 |
| 4. Environment conditions: | Corresponding to Vectron standard CF001 |

Edited by: _____ date: _____ name: _____