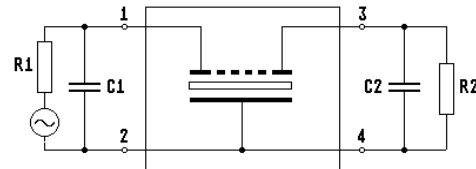
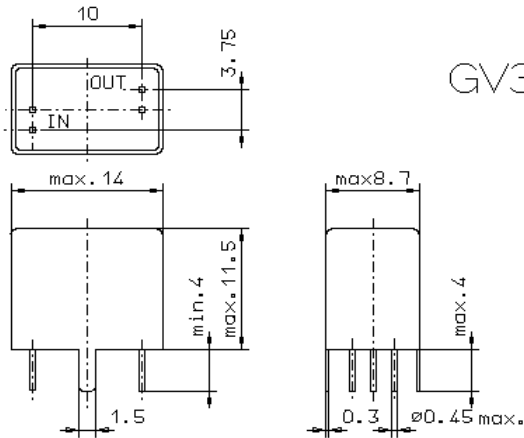


Specification for monolithic crystal filter:

MQF 21.4-2000/04

1. General

1.1. Package:

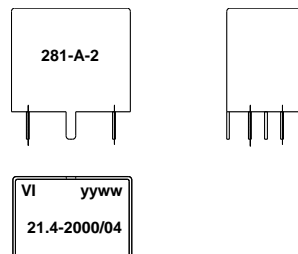


- | | |
|-----------------------------------|------------------|
| 1.2. Type name: | MQF 21.4-2000/04 |
| 1.3. Number of poles: | 10 |
| 1.4. Operable temperature range: | -40°C to +100°C |
| 1.5. Operating temperature range: | -40°C to +85°C |
| 1.6. Storage temperature range: | -55°C to +100°C |

2. Electric values

- | | |
|---|--|
| 2.1. Nominal centre frequency f_0 : | 21.4 MHz |
| 2.2. Pass band | |
| 2.2.1. Centre frequency f_c : | 21.4 MHz \pm 430 Hz |
| 2.2.2. Bandwidth between 6 dB - frequencies: | $\geq f_c \pm 10$ kHz |
| 2.2.3. Ripple: | $\leq \pm 1.0$ dB at $f_c \pm 8.5$ kHz |
| 2.2.4. Insertion loss:
(measured on smallest attenuation in pass band) | ≤ 3.0 dB |
| 2.3. Stop band | |
| 2.3.1. $f_0 \pm 17.5$ kHz | ≥ 60 dB |
| 2.3.2. $f_0 \pm 25$ kHz | ≥ 90 dB |
| 2.3.3. $f_0 + 25$ kHz.....+ 30 MHz | ≥ 90 dB |
| 2.3.4. $f_0 - 25$ kHz.....- 10 MHz | ≥ 90 dB |
| 2.4. Terminating impedance (input and output): | 1500 Ω // 2.5 pF |
| 2.5. Maximum input power level: | 10 mW |

3. Marking:



- | | |
|----------------------------|---|
| 4. Environment conditions: | Corresponding to Vectron standard CF001 |
|----------------------------|---|

Edited by: _____ date: _____ name: _____