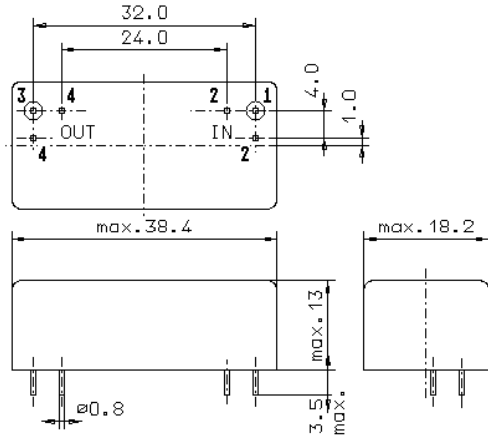


Specification for monolithic crystal filter:

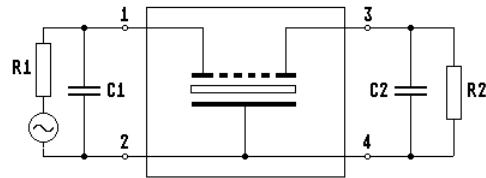
MQF 21.4-2000/27

1. General

1.1. Package:



GM17



- | | |
|-----------------------------------|------------------|
| 1.2. Type name: | MQF 21.4-2000/27 |
| 1.3. Number of poles: | 10 |
| 1.4. Operating temperature range: | -45°C to +85°C |
| 1.5. Storage temperature range: | -55°C to +105°C |

2. Electric values

- | | |
|---|------------------------------------|
| 2.1. Nominal centre frequency fo: | 21.4 MHz |
| 2.2. Pass band | |
| 2.2.1. Centre frequency fc: | 21.4 MHz ± 430 Hz |
| 2.2.2. Bandwidth between 6 dB - frequencies: | ≥ fc ± 10.0 kHz |
| 2.2.3. Ripple: | ≤ 1.0 dB at fc ± 7.5 kHz |
| 2.2.4. Group delay distortion: | ≤ 110 μs at fc ± 8.5 kHz |
| 2.2.5. Insertion loss:
(measured on smallest attenuation in pass band) | ≤ 4.5 dB |
| 2.3. Stop band | |
| 2.3.1. fo ± 17.5 kHz | ≥ 60 dB |
| 2.3.2. fo ± 25 kHz | ≥ 90 dB |
| 2.3.3. Alternate attenuation: | ≥ 90 dB |
| 2.4. Terminating impedance (input and output): | 50 Ω // 0 pF |
| 2.5. Out band intermodulation | |
| test tones frequencies: fo ± 100 / ± 200 kHz | IM: > 74 dB (i. e. IP3 > 30 dBm) |
| test tones frequencies: fo ± 250 / ± 500 kHz | IM: > 84 dB (i. e. IP3 > 35 dBm) |
| input power: | -7 dBm |

3. Marking: manufacturer, date code
MQF 21.4-2000/27

4. Environment conditions: Corresponding to Vectron standard CF001

Edited by: date: _____ name: _____