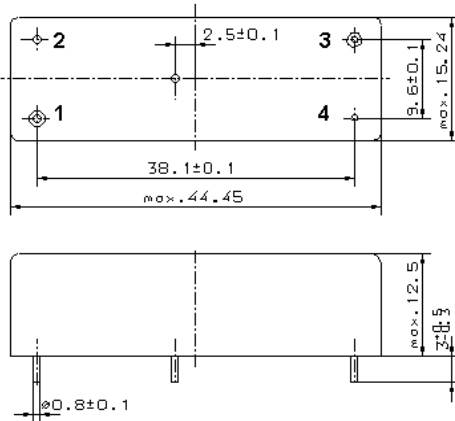


Specification for monolithic crystal filter:

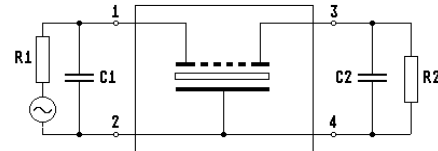
MQF 21.4-2200/09

1. General

1.1. Package:



GM 29



- 1.2. Type name: MQF 21.4-2200/09
- 1.3. Number of poles: 8
- 1.4. Operating temperature range: -40°C to +90°C
- 1.5. Operable temperature range: -55°C to +110°C
- 1.6. Storage temperature range: -55°C to +110°C

2. Electric values

- 2.1. Nominal centre frequency fo: 21.4 MHz
- 2.2. **Pass band**
 - 2.2.1. Bandwidth between 6 dB - frequencies: $\geq f_0 \pm 11.0$ kHz
 - 2.2.2. Change of bandwidth: ≤ 1 kHz (in operable temperature range)
 - 2.2.3. Ripple: ≤ 2.0 dB at $f_0 \pm 8.8$ kHz
 - 2.2.4. Ripple: ≤ 3.0 dB at $f_0 \pm 10.0$ kHz
 - 2.2.5. Insertion loss: ≤ 4.0 dB
(measured on smallest attenuation in pass band)
- 2.3. **Stop band**
 - 2.3.1. $f_0 \pm 22$ kHz ≥ 60 dB
 - 2.3.2. $f_0 \pm 50$ kHz..... ± 5000 kHz > 80 dB
- 2.4. Terminating impedance (input and output): $50 \Omega // 0$ pF
- 3. Marking: manufacturer, date code
MQF 21.4-2200/09
- 4. Environment conditions: Corresponding to Vectron standard CF001

Edited by: _____ date: _____ name: _____