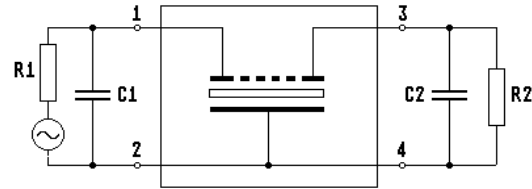
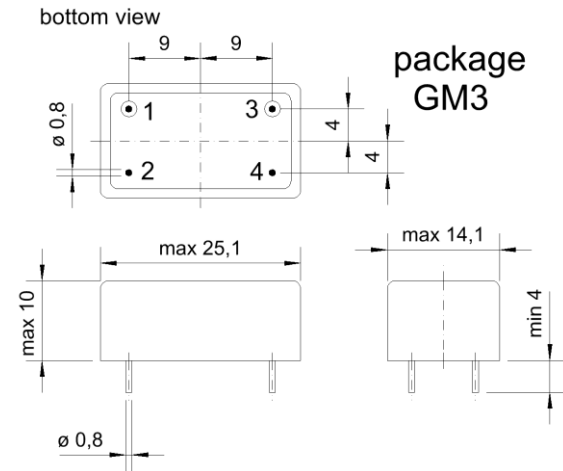


Specification for monolithic crystal filter:

**MQF 21.4-2500 / 07**

**1. General**

**1.1. Package:**

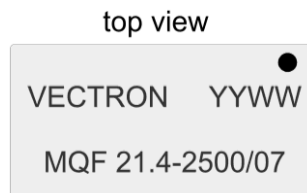


- |                                   |                  |
|-----------------------------------|------------------|
| 1.2. Type name:                   | MQF 21.4-2500/07 |
| 1.3. Number of poles:             | 8                |
| 1.4. Operating temperature range: | -40°C to +85°C   |
| 1.5. Storage temperature range:   | -45°C to +85°C   |

**2. Electric values**

- |   |  |
|---|--|
| 2.1. Nominal centre frequency fo:   | 21.4 MHz                                     |
| 2.2. <b>Pass band</b>   |  |
| 2.2.1. Bandwidth between 3 dB - frequencies:                                | > fo ± 12.5 kHz                              |
| 2.2.2. Ripple:  | < 2.0 dB at fo ± 10 kHz                      |
| 2.2.3. Insertion loss:<br>( measured on smallest attenuation in pass band ) | < 3.5 dB                                     |
| 2.3. <b>Stop band</b>   |  |
| 2.3.1. fo ± 30 kHz  | > 70 dB                                      |
| 2.3.2. fo ± 40 kHz.....± 500 kHz:   | > 90 dB                                      |
| 2.3.3. Spurious responses:  | > 60 dB                                      |
| 2.4. Terminating impedance ( input and output ):                            | 50 Ω // 0 pF                                 |
| 2.5. Maximum input power level:   | +10 dBm ( +20 dBm without destruction )      |
| 2.6. Level linearity vs. input power at 21.4 MHz                            | < 0.15 dB ( input power range -40 to 0 dBm ) |

**3. Marking:**



- |                            |   |
|----------------------------|---|
| 4. Environment conditions: | Corresponding to Vectron standard CF003 |
|----------------------------|---|