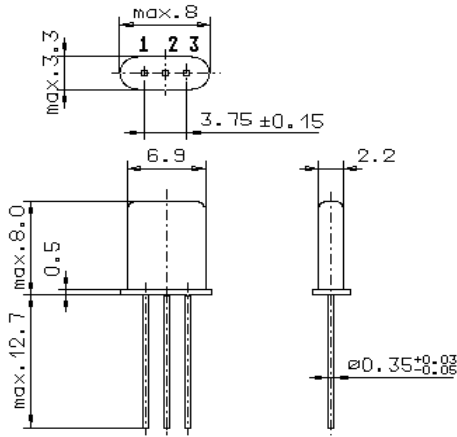


Specification for monolithic crystal filter:

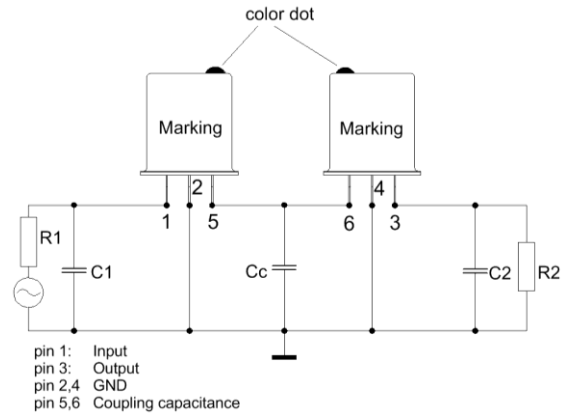
**MQF 21.4-3000/02**

1. General

1.1. Package: 2 x GH 9 ( each filter consists of a pair of two matched duals )



GH9



- |                                   |                  |
|-----------------------------------|------------------|
| 1.2. Type name:                   | MQF 21.4-3000/02 |
| 1.3. Number of poles:             | 4                |
| 1.4. Operable temperature range:  | -30°C to +80°C   |
| 1.5. Operating temperature range: | -30°C to +70°C   |
| 1.6. Storage temperature range:   | -55°C to +80°C   |

2. Electric values

- |  |                                   |
|--|-----------------------------------|
| 2.1. Nominal centre frequency $f_0$ :                | 21.4 MHz                          |
| <b>2.2. Pass band</b>                                |                                   |
| 2.2.1. Bandwidth between 3 dB - frequencies:         | $\geq f_0 \pm 15$ kHz             |
| 2.2.2. Ripple:                                       | $\leq 1.5$ dB at $f_0 \pm 10$ kHz |
| 2.2.3. Insertion loss:                               | $\leq 2.0$ dB                     |
| ( measured on smallest attenuation in pass band )    |                                   |
| <b>2.3. Stop band</b>                                |                                   |
| 2.3.1. $f_0 \pm 50$ kHz                              | $\geq 40$ dB                      |
| 2.3.2. $f_0 \pm 100$ kHz                             | $\geq 60$ dB                      |
| 2.3.3. Spurious responses:                           | $\geq 14$ dB                      |
| 2.4. Terminating impedance R/C ( input and output ): | 2200 $\Omega$ // 0.5 pF           |
| 2.4.1. Coupling capacitance ( Cc ):                  | 3.5 pF                            |

- |                            |  |
|----------------------------|--|
| 3. Marking:                | manufacturer ( “VI” or “TFT” ), date code (YYWW)<br>21.4-3000/02             |
| 4. Environment conditions: | Corresponding to Vectron standard CF001                                      |
| 5. Packing:                | bulk ( maximum 250 pcs. / box )<br>card box dimension: ( 200 x 145 x 35 ) mm |

Edited by: \_\_\_\_\_ date: \_\_\_\_\_ name: \_\_\_\_\_