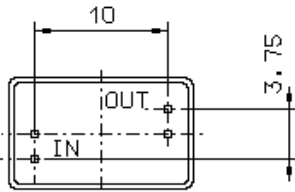


Specification for monolithic crystal filter:

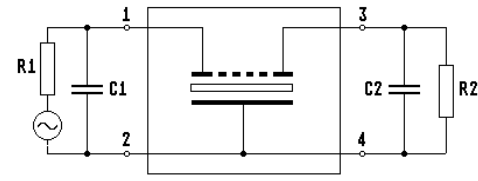
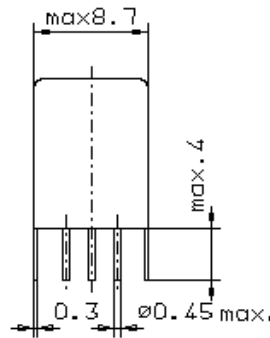
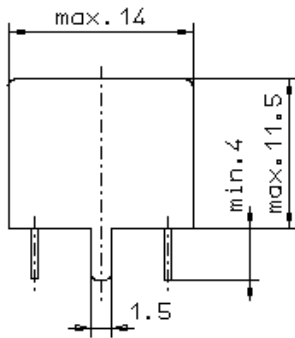
MQF 21.4-3000/11

1. General

1.1. Package:



GV3



- 1.2. Type name: MQF 21.4-3000/11
- 1.3. Number of poles: 8
- 1.4. Operating temperature range: -20°C to +70°C
- 1.5. Storage temperature range: -35°C to +85°C

2. Electric values

- 2.1. Nominal centre frequency fo: 21.4 MHz
- 2.2. **Pass band**
 - 2.2.1. Bandwidth between 3 dB - frequencies: $\geq f_0 \pm 15 \text{ kHz}$
 - 2.2.2. Ripple: $\leq 2.0 \text{ dB at } f_0 \pm 12.0 \text{ kHz}$
 - 2.2.3. Insertion loss: $\leq 3.5 \text{ dB}$
(measured on smallest attenuation in pass band)
- 2.3. **Stop band**
 - 2.3.1. $f_0 \pm 35 \text{ kHz}$ $\geq 70 \text{ dB}$
 - 2.3.2. $f_0 \pm 50 \text{ kHz} \dots \dots \pm 500 \text{ kHz}$ $\geq 90 \text{ dB (except spurious)}$
- 2.4. Terminating impedance (input and output): $2000 \Omega // 0 \text{ pF}$
- 3. Marking: manufacturer, date code
21.4-3000/11
- 4. Environment conditions: Corresponding to Vectron standard CF001

Edited by: _____ date: _____ name: _____