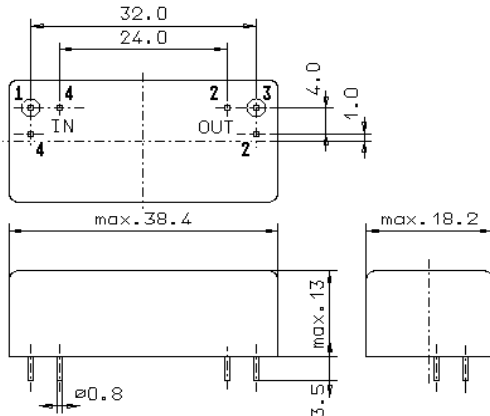


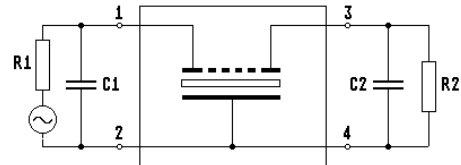
Specification for monolithic crystal filter: **MQF 21.4-3000/37V0**

## 1. General

### 1.1. Package:



GM17.1



- |                                   |                    |
|-----------------------------------|--------------------|
| 1.2. Type name:                   | MQF 21.4-3000/37V0 |
| 1.3. Number of poles:             | 6                  |
| 1.4. Operating temperature range: | -10°C to +70°C     |
| 1.5. Storage temperature range:   | -35°C to +85°C     |

## 2. Electric values

- |   |   |
|---|---|
| 2.1. Nominal centre frequency fo:   | 21.4 MHz                                      |
| <b>2.2. Pass band</b>   |   |
| 2.2.1. Centre frequency fc:   | 21.4 MHz ± 1300 Hz                            |
| 2.2.2. Bandwidth between 6 dB - frequencies:                                | ≥ fc ± 15 kHz                                 |
| 2.2.3. Ripple:  | Gaussian                                      |
| 2.2.4. Group delay distortion ( at fc ± 15 kHz ):                           | ≤ 5.0 μs                                      |
| 2.2.5. Insertion loss:<br>( measured on smallest attenuation in pass band ) | ≤ 4.0 dB                                      |
| <b>2.3. Stop band</b>   |   |
| 2.3.1. fc ± 56 kHz  | ≥ 60 dB                                       |
| 2.3.2. Alternate attenuation ( fo ± 1.2 MHz.....5 MHz )                     | ≥ 90 dB ( except spurious )                   |
| 2.4. Terminating impedance ( input and output ):                            | 50 Ω // 0 pF                                  |
| <b>2.5. Intermodulation</b>   |   |
| IP 3:   | > 30 dBm                                      |
| frequencies:  | 21.50 MHz / 21.60 MHz                         |
| input power:  | 0 dBm   |
| IM:   | > 60 dB                                       |
| 3. Marking:   | manufacturer, date code<br>MQF 21.4-3000/37V0 |
| 4. Environment conditions:  | Corresponding to Vectron CF001                |