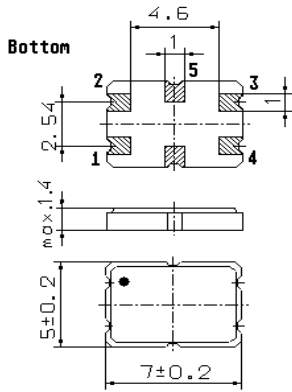


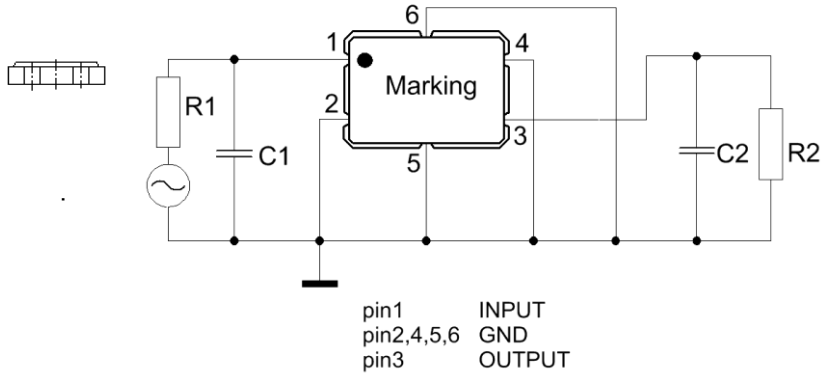
Specification for monolithic crystal filter: **MQF 21.4 - 3000/52**

1. General

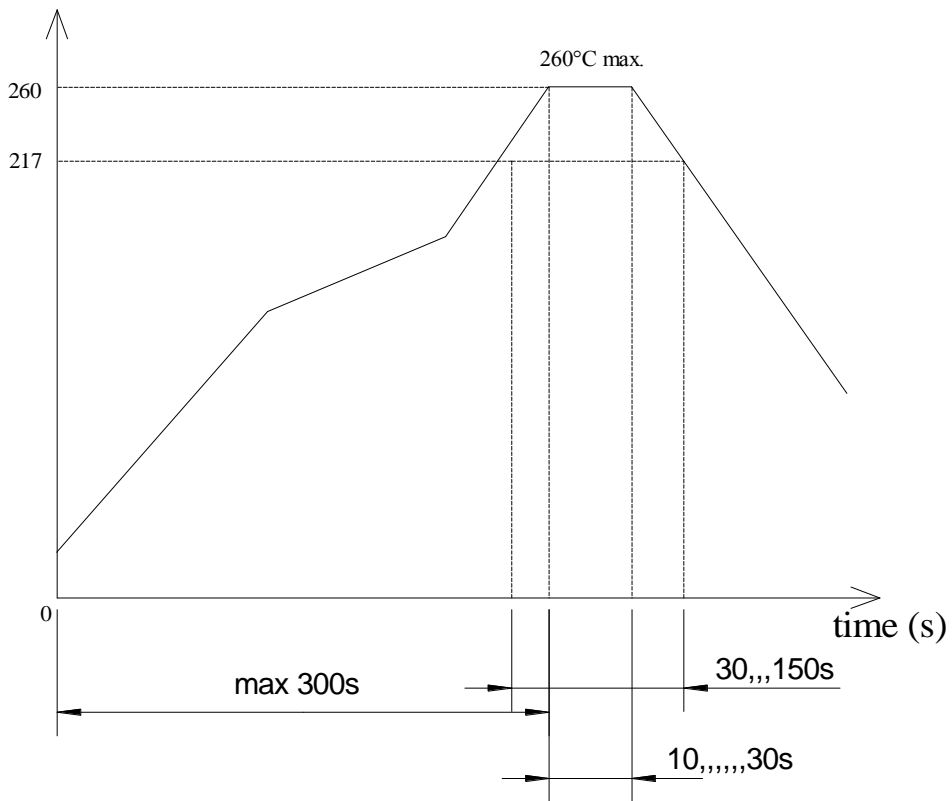
1.1. Package:



**GS 2**



temperature (°C)



Reflow soldering: three times max.

- 1.2. Type name: MQF 21.4-3000/52
- 1.3. Number of poles: 2
- 1.4. Operating temperature range: -40°C to +85°C
- 1.5. Storage temperature range: -45°C to +95°C

**2. Electric values**

- 2.1. Nominal centre frequency fo: 21.4 MHz

**2.2. Pass band**

- 2.2.1. Bandwidth between 3 dB - frequencies:  $> f_o \pm 15 \text{ kHz}$
- 2.2.2. Ripple:  $< 1.5 \text{ dB at } f_o \pm 12 \text{ kHz}$
- 2.2.3. Insertion loss:  $< 3.0 \text{ dB}$   
( measured on smallest attenuation in pass band )
- 2.2.4. Differential group delay:  $< 20 \mu\text{s at } f_o \pm 15 \text{ kHz}$

**2.3. Stop band**

- 2.3.1.  $f_o \pm 35 \text{ kHz}$   $> 10 \text{ dB}$
- 2.3.2.  $f_o - 910 \text{ kHz}$   $> 50 \text{ dB}$
- 2.3.3. Spurious responses  $f_o +150 \text{ kHz} \dots\dots f_o +1.0 \text{ MHz}$   $> 5.0 \text{ dB}$
- 2.4. Terminating impedance R//C ( input and output ):  $3000 \Omega // 0.5 \text{ pF}$

- 2.5. Maximum input power level
  - operating: 0 dBm
  - non - damaged: +10 dBm

- 3. Marking:
  - M214A3
  - date code ( yyww )

- 4. Environment conditions: Corresponding to Vectron CF001

- 5. Filters are Pb-free and 2002 /95 / EC RoHS compliant

---

Edited by: \_\_\_\_\_ date: \_\_\_\_\_ name: \_\_\_\_\_