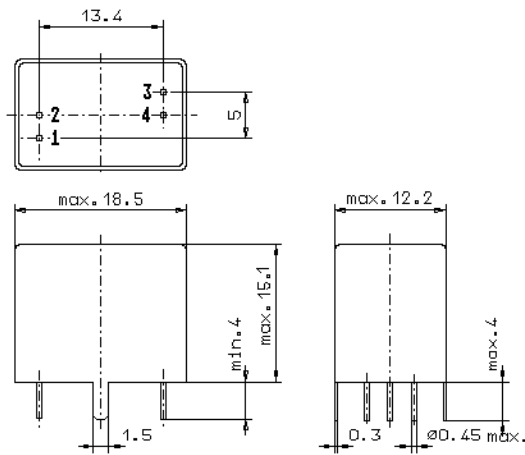


Specification for monolithic crystal filter:

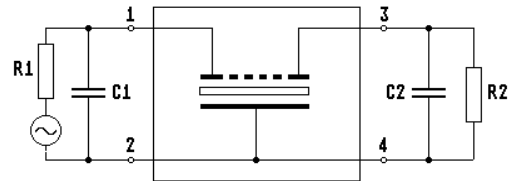
MQF 21.4-3000/59

1. General

1.1. Package:



GV5.1



- | | |
|-----------------------------------|------------------|
| 1.2. Type name: | MQF 21.4-3000/59 |
| 1.3. Number of poles: | 6 |
| 1.4. Operating temperature range: | -20°C to +70°C |
| 1.5. Storage temperature range: | -45°C to +85°C |

2. Electric values

- | | |
|---|---|
| 2.1. Nominal centre frequency f_0 : | 21.4 MHz |
| 2.2. Pass band | |
| 2.2.1. Bandwidth between 3 dB - frequencies: | $\geq f_0 \pm 15$ kHz |
| 2.2.2. Ripple: | ≤ 1.5 dB at $f_0 \pm 12$ kHz |
| 2.2.3. Insertion loss:
(measured on smallest attenuation in pass band) | ≤ 3.5 dB |
| 2.3. Stop band | |
| 2.3.1. $f_0 \pm 65$ kHz | ≥ 50 dB |
| 2.3.2. $f_0 \pm 85$ kHz | ≥ 60 dB |
| 2.3.3. Alternate attenuation | ≥ 80 dB (except spurious) |
| 2.4. Terminating impedance (input and output): | $50 \Omega // 0$ pF |
| 2.5. Maximum input power level: | +10dBm / +20dBm (working / non-damaged) |
| 3. Marking: | manufacturer, date code
MQF 21.4-3000/59 |
| 4. Environment conditions: | Corresponding to Vectron standard CF001 |

Edited by: _____ date: _____ name: _____