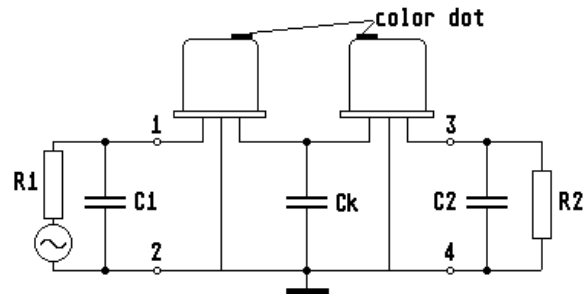
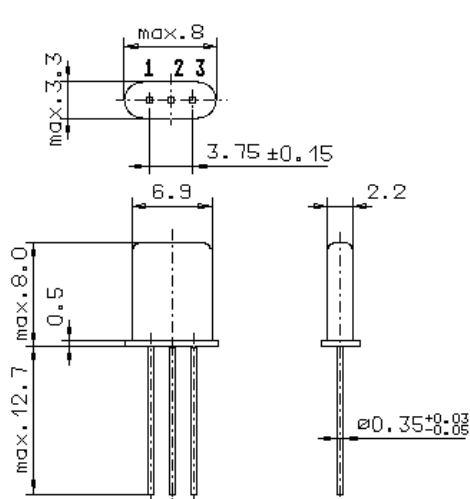


Specification for monolithic crystal filter:

MQF 21.4-4000/18

1. General

1.1. Package:



- | | |
|-----------------------------------|------------------|
| 1.2. Type name: | MQF 21.4-4000/18 |
| 1.3. Number of poles: | 4 |
| 1.4. Operating temperature range: | -40°C to +85°C |
| 1.5. Storage temperature range: | -45°C to +85°C |

2. Electric values

- | | |
|---|---|
| 2.1. Nominal centre frequency fo: | 21.4 MHz |
| 2.2. Pass band | |
| 2.2.1. Bandwidth between 3 dB - frequencies: | > fo ± 20 kHz |
| 2.2.2. Ripple: | < 1.5 dB at fo ± 15 kHz |
| 2.2.3. Insertion loss: | < 2.0 dB |
| (measured on smallest attenuation in pass band) | |
| 2.3. Stop band | |
| 2.3.1. fo ± 67.5 kHz | > 40 dB |
| 2.3.2. fo ± 120 kHz | > 60 dB |
| 2.3.3. Alternate Attenuation | > 80 dB (except spurious) |
| 2.3.4. Spurious response fo +67.5 kHz...+500 kHz | > 30 |
| 2.4.1. Nominal input power level | + 0 dBm |
| 2.4.2. Maximal input power level | + 15 dBm |
| 2.5. Terminating impedance R/C (input and output) | 4000 Ω // -0.3 pF |
| 2.6. Coupling capacitance | 0.7 pF |
| 3. Marking: | manufacturer, date code
21.4-
4000/18 |
| 4. Environment conditions: | Corresponding to Vectron standard CF001 |