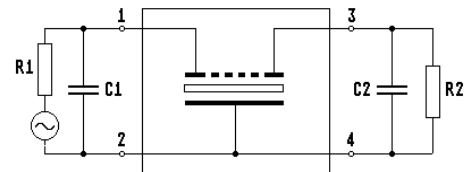
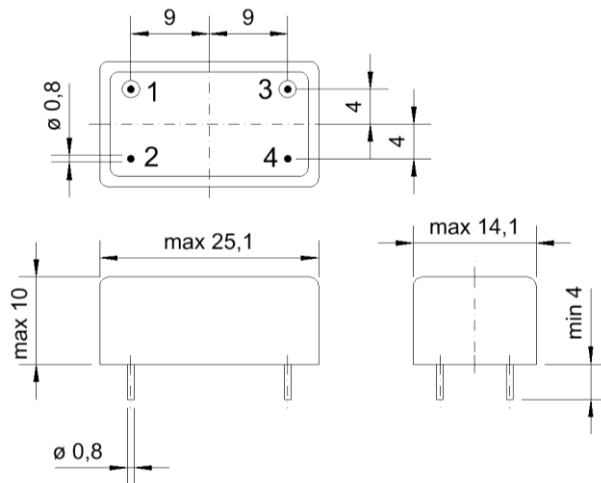


Specification for monolithic crystal filter: **MQF 21.4 - 4600 / 08 V 0**

1. General

1.1. Package:

bottom view



- | | |
|-----------------------------------|--------------------|
| 1.2. Type name: | MQF 21.4-4600/08V0 |
| 1.3. Number of poles: | 6 |
| 1.4. Operating temperature range: | -40°C to +85°C |
| 1.5. Storage temperature range: | -55°C to +100°C |

2. Electric values

- | | |
|---|-----------------------------|
| 2.1. Nominal centre frequency fo: | 21.4 MHz |
| 2.2. Pass band | |
| 2.2.1. Centre frequency fc: | 21.4 MHz ± 3000 Hz |
| 2.2.2. Bandwidth between 3 dB - frequencies: | ≥ fo ± 23 kHz |
| 2.2.3. Ripple: | ≤ 2.0 dB at fo ± 18.0 kHz |
| 2.2.4. Insertion loss:
(measured on smallest attenuation in pass band) | ≤ 4.0 dB |
| 2.3. Stop band | |
| 2.3.1. fo ± 120 kHz | ≥ 70 dB |
| 2.3.2. Alternate attenuation | ≥ 70 dB (except spurious) |
| 2.4. Terminating impedance (input and output): | 50 Ω // 0 pF |

top view

3. Marking:



- | | |
|----------------------------|---|
| 4. Environment conditions: | Corresponding to Vectron standard CF001 |
|----------------------------|---|

Edited by: _____ date: _____ name: _____