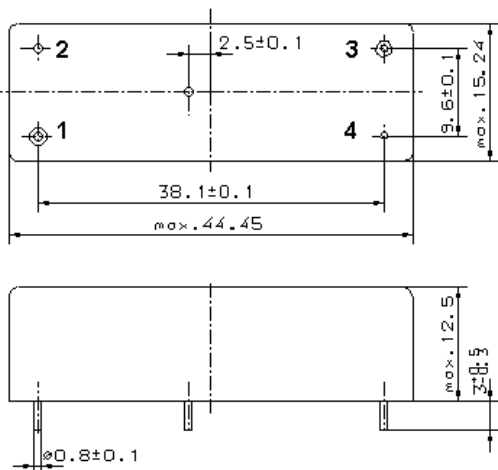


Specification for monolithic crystal filter:

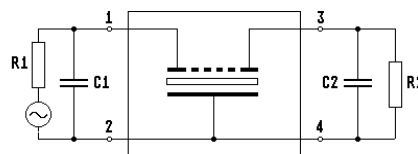
MQF 21.4-5000/11

1. General

1.1. Package:



GM 29



- 1.2. Type name: MQF 21.4-5000/11
- 1.3. Number of poles: 8
- 1.4. Operating temperature range: -40°C to +90°C
- 1.5. Storage temperature range: -55°C to +110°C

2. Electric values

- 2.1. Nominal centre frequency fo: 21.4 MHz
- 2.2. **Pass band**
 - 2.2.1. Centre frequency fc: 21.4 MHz ± 1.0 kHz at 25°C
21.4 MHz ± 1.5 kHz at -40°C to +90°C
 - 2.2.2. Bandwidth between 6 dB - frequencies: ≥ fo ± 25 kHz
 - 2.2.3. Ripple: ≤ 3.0 dB at fo ± 23 kHz
≤ 2.0 dB at fo ± 20 kHz
 - 2.2.4. Insertion loss: ≤ 4.0 dB
(measured on smallest attenuation in pass band)
- 2.3. **Stop band**
 - 2.3.1. fo ± 50 kHz ≥ 60 dB
 - 2.3.2. fo ± 80 kHz ≥ 80 dB
 - 2.3.3. fo ± 80 kHz.....± 5 MHz ≥ 80 dB (except spurious)
- 2.4. Terminating impedance (input and output): 50 Ω // 0 pF
- 3. Marking: manufacturer, date code
MQF 21.4-5000/11
- 4. Environment conditions: Corresponding to Vectron standard CF001

Edited by: _____ date: _____ name: _____