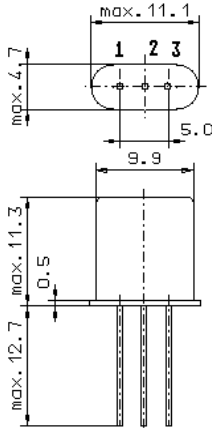


Specification for monolithic crystal filter:

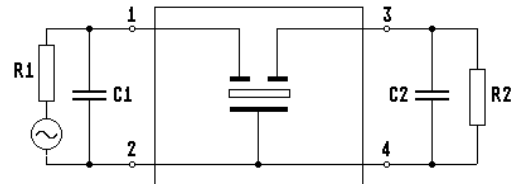
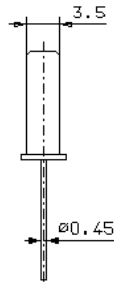
MQF 21.4-5200/02V0

1. General

1.1. Package:



GH3



- | | |
|-----------------------------------|--------------------|
| 1.2. Type name: | MQF 21.4-5200/02V0 |
| 1.3. Number of poles: | 2 |
| 1.4. Operable temperature range: | -20°C to +85°C |
| 1.5. Operating temperature range: | -20°C to +70°C |
| 1.6. Storage temperature range: | -40°C to +90°C |

2. Electric values

- | | |
|---|---|
| 2.1. Nominal centre frequency f_0 : | 21.4 MHz |
| 2.2. Pass band | |
| 2.2.1. Bandwidth between 3 dB - frequencies: | $\geq f_0 \pm 26$ kHz |
| 2.2.2. Ripple: | ≤ 1.0 dB at $f_0 \pm 20$ kHz |
| 2.2.3. Insertion loss: | ≤ 1.0 dB |
| (measured on smallest attenuation in pass band) | |
| 2.3. Stop band | |
| 2.3.1. $f_0 \pm 60$ kHz | ≥ 10 dB |
| 2.3.2. $f_0 + 700$ kHz.....+10 MHz | ≥ 40 dB |
| 2.3.3. $f_0 - 300$ kHz.....- 10 MHz | ≥ 40 dB |
| 2.3.4. Spurious responses: | |
| - within $f_0 \pm 70$ kHz: | no responses |
| - (responses with 20-dB Bandwidth > 10 kHz) | |
| $f_0 \pm 160$ kHz..... ± 250 kHz: | ≥ 15 dB |
| $f_0 \pm 250$ kHz..... ± 10 MHz: | ≥ 20 dB |
| - (responses with 20-dB Bandwidth < 10 kHz) | |
| $f_0 \pm 70$ kHz..... ± 10 MHz: | ≥ 0 dB |
| 2.4. Terminating impedance (input and output): | $3600 \Omega // -1.8$ pF |
| 2.5. Level nonlinearity: | ≤ 0.3 dB (range: -40 dBm to 0 dBm) |
| 3. Marking: | manufacturer, date code
21.4-5200/02V0 |
| 4. Environment conditions: | Corresponding to Vectron standard CF001 |

Edited by: _____ date: _____ name: _____