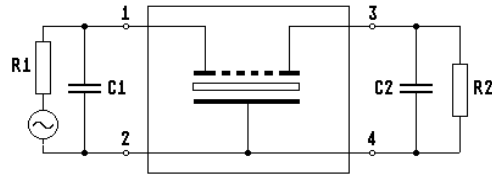
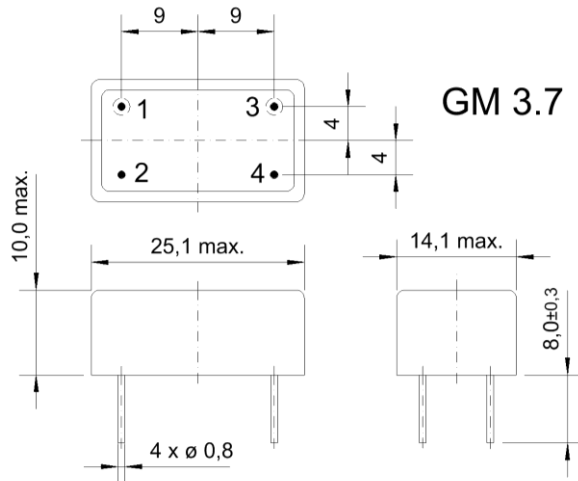


Specification for monolithic crystal filter:

MQF 27.0-0600/03

1. General

1.1. Package:



- 1.2. Type name: MQF 27.0-0600/03
- 1.3. Number of poles: 6
- 1.4. Operating temperature range: -20°C to +70°C
- 1.5. Storage temperature range: -45°C to +85°C

2. Electric values

- 2.1. Nominal centre frequency f_0 : 27.0 MHz
- 2.2. **Pass band**
 - 2.2.1. Bandwidth between 3 dB - frequencies: $> f_0 \pm 3.0$ kHz
 - 2.2.2. Ripple: < 2.0 dB at $f_0 \pm 2.0$ kHz
 - 2.2.3. Insertion loss: < 4.0 dB
(measured on smallest attenuation in pass band)
- 2.3. **Stop band**
 - 2.3.1. $f_0 \pm 10$ kHz: > 40 dB
 - 2.3.2. $f_0 \pm 12.5$ kHz: > 60 dB
 - 2.3.3. Alternate Attenuation: > 60 dB
- 2.4. Nominal / maximum input power level: 0 dBm / +15 dBm
- 2.5. Terminating impedance R//C (input and output): $50 \Omega // 0$ pF

3. Marking:

top view



- 4. Environment conditions: Corresponding to Vectron standard CF001