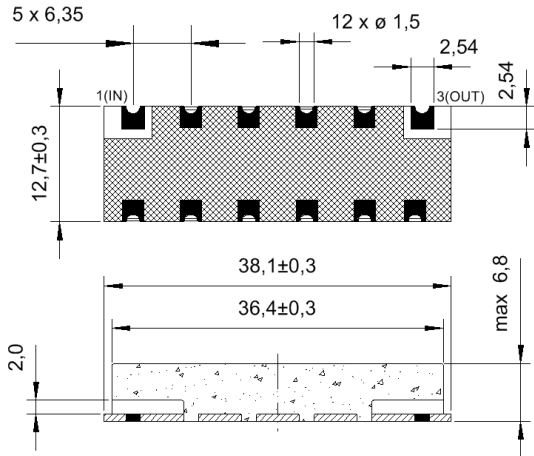


Specification for monolithic crystal filter:

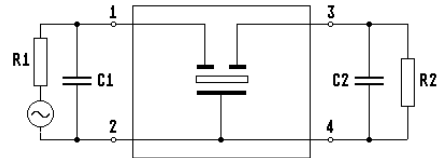
MQF 30.0-1500/09

1. General

1.1. Package:



GS 21



1: Input
3: Output
All the other 10pads are connected with GND

- | | |
|-----------------------------------|------------------|
| 1.2. Type name: | MQF 30.0-1500/09 |
| 1.3. Number of poles: | 4 |
| 1.4. Operating temperature range: | -20°C to +60°C |
| 1.5. Storage temperature range: | -30°C to +75°C |

2. Electric values

- | | |
|---|------------------------------------|
| 2.1. Nominal centre frequency fo: | 30.0 MHz |
| 2.2. Pass band | |
| 2.2.1. Bandwidth between 3 dB - frequencies: | $\geq f_o \pm 10$ kHz |
| 2.2.2. Ripple: | ≤ 1.0 dB at $f_o \pm 7.5$ kHz |
| 2.2.3. Insertion loss:
(measured on smallest attenuation in pass band) | ≤ 3.0 dB |
| 2.2.4. Input return loss: | > 14 dB at $f_o \pm 6.0$ kHz |

2.3. Stop band

- | | |
|-------------------------------|-------------------------------|
| 2.3.1. $f_o \pm 50$ kHz | > 50 dB |
| 2.3.2. Alternate attenuation: | > 70 dB (except spurious) |

- | | |
|---|---------------------|
| 2.4. Terminating impedance R//C (input and output): | 50 Ω // 0 pF |
| 2.5. Maximum input power (working / non-damaged) | +10 dBm / +20 dBm |

- | | |
|-------------|---|
| 3. Marking: | manufacturer, date code
OUT IN
MQF 30.0-1500/09 |
|-------------|---|

- | | |
|----------------------------|---------------------------------------|
| 4. Environment conditions: | Corresponding to Vectron MIL standard |
|----------------------------|---------------------------------------|

Edited by: _____ date: _____ name: _____